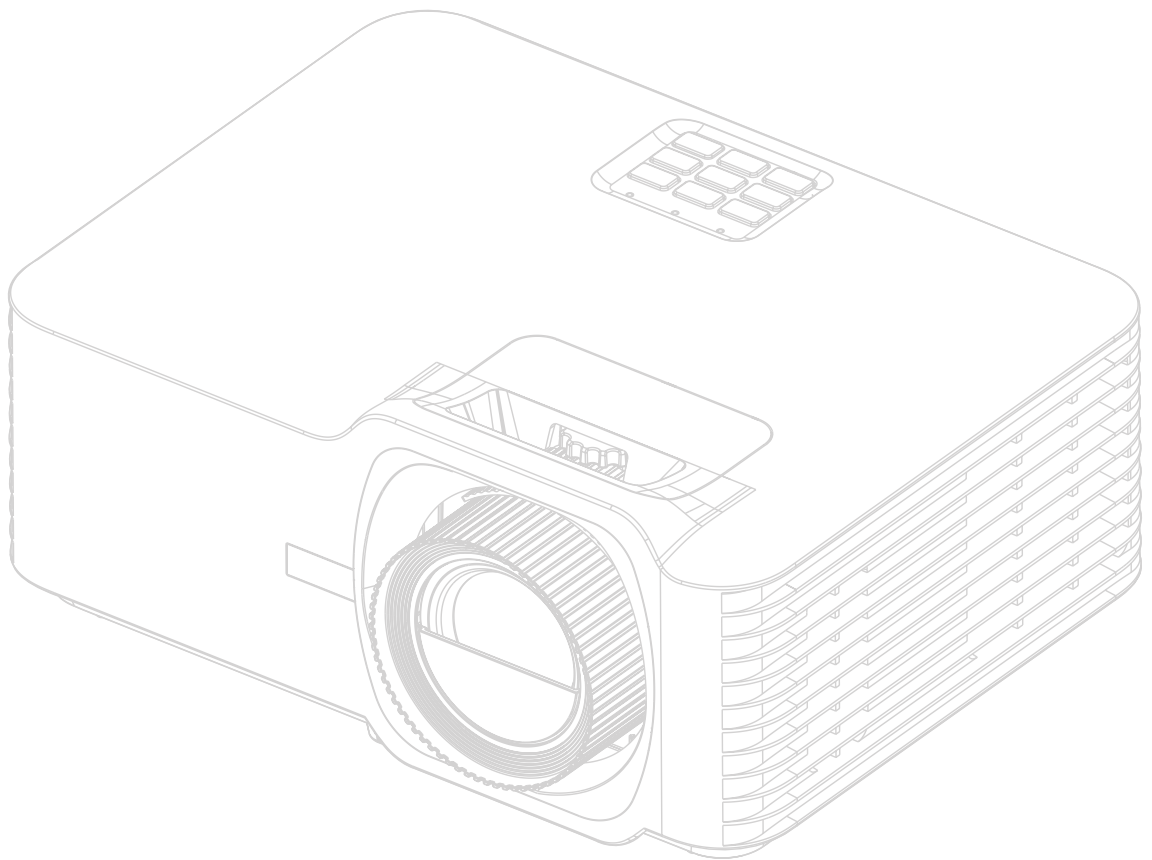


V704K

Projector User Guide



IMPORTANT: Please read this User Guide to obtain important information on installing and using your product in a safe manner, as well as registering your product for future service. Warranty information contained in this User Guide will describe your limited coverage from ViewSonic® Corporation, which is also found on our web site at <http://www.viewsonic.com> in English, or in specific languages using the Regional selection box on our website.

Model No. VS19895
P/N: V704K

Thank you for choosing ViewSonic®

As a world-leading provider of visual solutions, ViewSonic® is dedicated to exceeding the world's expectations for technological evolution, innovation, and simplicity. At ViewSonic®, we believe that our products have the potential to make a positive impact in the world, and we are confident that the ViewSonic® product you have chosen will serve you well.

Once again, thank you for choosing ViewSonic®!

Safety Precautions

Please read the following **Safety Precautions** before you start using the projector.

- Keep this user guide in a safe place for later reference.
- Read all warnings and follow all instructions.
- Allow at least 20" (50 cm) clearance around the projector to ensure proper ventilation.
- Place the projector in a well-ventilated area. Do not place anything on the projector that prevents heat dissipation.
- Do not place the projector on an uneven or unstable surface. The projector may fall over, causing personal injury or projector malfunction.
- Do not look straight at the projector lens during operation. The intense light beam may damage your eyes.
- Always open the lens shutter or remove the lens cap when the projector lamp is on.
- Do not block the projection lens with any objects when the projector is under operation as this could cause objects to become heated and deformed or even cause a fire.
- Do not attempt to disassemble the projector. There are dangerous high voltages inside which may cause death if you should come into contact with live parts.
- When moving the projector, be careful not to drop or bump the projector on anything.
- Do not place any heavy objects on the projector or connection cables.
- Avoid exposing the projector to direct sunlight or other sources of sustained heat. Do not install near any heat sources such as radiators, heat registers, stoves, or other devices (including amplifiers) that may increase the temperature of the projector to dangerous levels.
- Do not place liquids near or on the projector. Liquids spilled into the projector may cause it to fail. If the projector does become wet, disconnect it from the power supply and call your local service center to have the projector serviced.
- When the projector is under operation, you may sense some heated air and odor from its ventilation grill. It is a normal operation and not a defect.
- Do not attempt to circumvent the safety provisions of the polarized or grounding-type plug. A polarized plug has two blades with one wider than the other. A grounding-type plug has two blades and a third grounding prong. The wide and third blade are provided for your safety. If the plug does not fit into your outlet, obtain an adapter and do not attempt to force the plug into the outlet.

- When connecting to a power outlet, DO NOT remove the grounding prong. Please ensure grounding prongs are NEVER REMOVED.
- Protect the power cord from being treaded upon or pinched, particularly at the plug, and at the point where it emerges from the projector.
- In some countries, the voltage is NOT stable. This projector is designed to operate safely within a voltage between 100 to 240 volts DC, but could fail if power cuts or surges of ± 10 volts occur. In areas where voltage may fluctuate or cut out, it is recommended that you connect your projector through a power stabilizer, surge protector, or uninterruptable power supply (UPS).
- If smoke, an abnormal noise, or a strange odor is present, immediately switch the projector off and call your dealer or ViewSonic®. It is dangerous to continue using the projector.
- Use only attachments/accessories specified by the manufacturer.
- Disconnect the power cord from the DC outlet if the projector is not being used for a long period of time.
- Refer all servicing to qualified service personnel.



CAUTION: Possibly hazardous optical radiation is emitted from this product. As with any bright light source, do not stare into the beam, RG2 IEC 62471-5:2015. Additional warning against eye exposure for close exposures less than 1 m.

Safety Precautions - Ceiling Mounting

Please read the following **Safety Precautions** before you start using the projector.

If you intend to mount the projector on the ceiling, it is strongly recommended that you use a proper fitting projector ceiling mount kit and that you ensure it is securely and safely installed.

If you use an inappropriate projector ceiling mount kit, there is a safety risk that the projector may fall from the ceiling due to an improper attachment through the use of the wrong gauge or length screws.

Laser Caution

This product belongs to CLASS I laser product and complies with IEC 60825-1:2014, EN 60825-1:2014/A11:2021, EN 50689:2021.

IEC 60825-1:2014, EN 60825-1:2014+A11:2021, EN 50689:2021 CLASS 1 CONSUMER LASER
PRODUCT RISK GROUP 2, Complies with 21 CFR 1040.10 and 1040.11 except for conformance as
a Risk Group 2 LIP as defined in IEC 62471-5:Ed.1.0. For more information see Laser Notice No. 57,
dated May 8, 2019.
IEC 60825-1:2014 等級1雷射產品RG2危險等級
IEC 60825-1:2014 1类激光产品RG2危险等级

Above laser cautions are located on the bottom of this apparatus.

- Notice is given to supervise children and to never allow them to stare into the projector beam at any distance from the projector.
- Notice is given to use caution when using the remote control for starting the projector while in front of the projection lens.
- Notice is given to the user to avoid the use of optical aids such as binoculars or telescopes inside the beam.

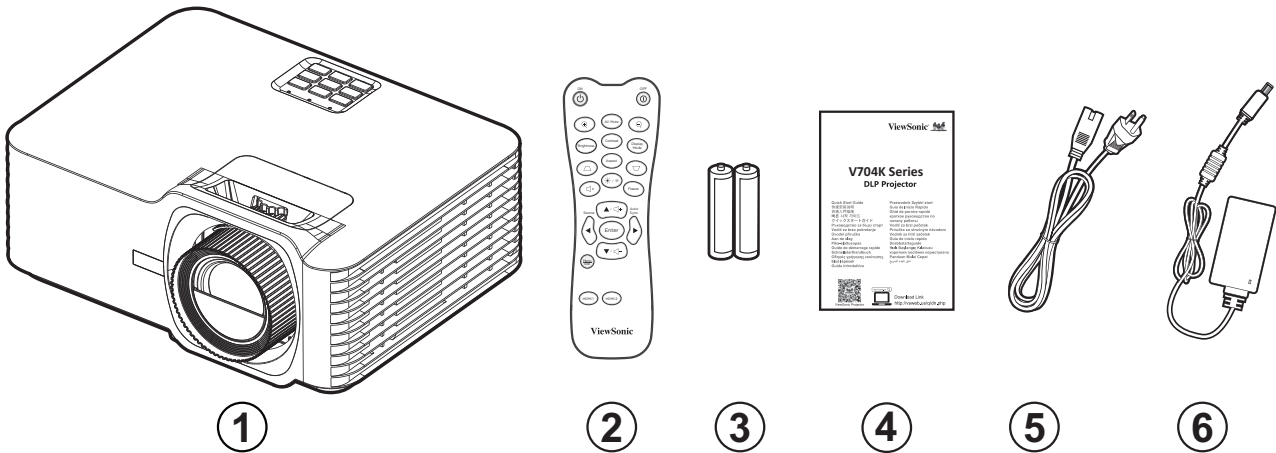
Contents

| | |
|--|-----------|
| Safety Precautions..... | 3 |
| Introduction | 9 |
| Package Contents | 9 |
| Product Overview | 10 |
| Projector..... | 10 |
| Keypad..... | 11 |
| Indicator Lights..... | 11 |
| I/O Ports | 12 |
| Remote Control | 13 |
| Initial Setup..... | 17 |
| Projection Location and Orientation | 17 |
| Projection Dimensions..... | 18 |
| Mounting the Projector | 19 |
| Using the Security Bar | 19 |
| Making Connections | 20 |
| Connecting to Power | 20 |
| Connecting to External Devices | 21 |
| HDMI Connection | 21 |
| Audio Connection..... | 22 |
| USB Connection..... | 23 |
| RS-232 Connection | 24 |
| Using the Projector..... | 25 |
| Starting Up the Projector..... | 25 |
| Selecting an Input Source | 26 |
| Adjusting the Projected Image | 27 |
| Adjusting the Projector’s Height and Projection Angle..... | 27 |
| Adjusting the Focus, Keystone, Lens Shift, and Zoom..... | 28 |
| Shutting Down the Projector | 29 |

| | |
|--|-----------|
| Menu Operation..... | 30 |
| On-Screen Display (OSD) Menu | 30 |
| Menu Navigation | 31 |
| On-Screen Display (OSD) Menu Tree..... | 32 |
| Menu Options..... | 38 |
| Display Menu..... | 38 |
| Audio Menu..... | 44 |
| Setup Menu..... | 45 |
| Information Menu..... | 48 |
| Appendix..... | 49 |
| Specifications..... | 49 |
| Projector Dimensions | 50 |
| Timing Chart | 51 |
| HDMI PC Timing | 51 |
| HDMI Extended Wide Timing..... | 51 |
| 3D Support Timing..... | 52 |
| Troubleshooting | 53 |
| LED Indicators..... | 55 |
| Maintenance..... | 56 |
| General Precautions | 56 |
| Cleaning the Lens | 56 |
| Cleaning the Case | 56 |
| Storing the Projector | 56 |
| Regulatory and Service Information | 57 |
| Compliance Information..... | 57 |
| FCC Compliance Statement..... | 57 |
| Industry Canada Statement..... | 57 |
| CE Conformity for European Countries | 58 |
| Declaration of RoHS2 Compliance..... | 59 |
| Indian Restriction of Hazardous Substances | 60 |
| Product Disposal at End of Product Life | 60 |
| Copyright Information | 61 |
| Customer Service | 62 |
| Limited Warranty | 63 |
| Mexico Limited Warranty..... | 66 |

Introduction

Package Contents

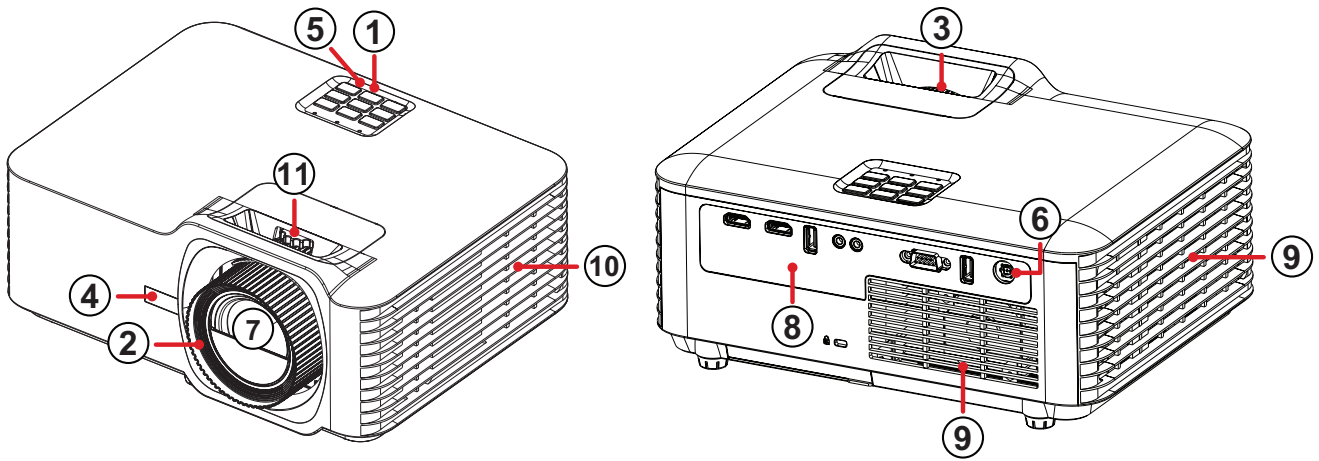


| Number | Description |
|--------|-------------------|
| 1 | Projector |
| 2 | Remote Control |
| 3 | Batteries |
| 4 | Quick Start Guide |
| 5 | Power Cord |
| 6 | Power Adapter |

NOTE: The power cord and remote control included in your package may vary depending on your country. Please contact your local reseller for more information.

Product Overview

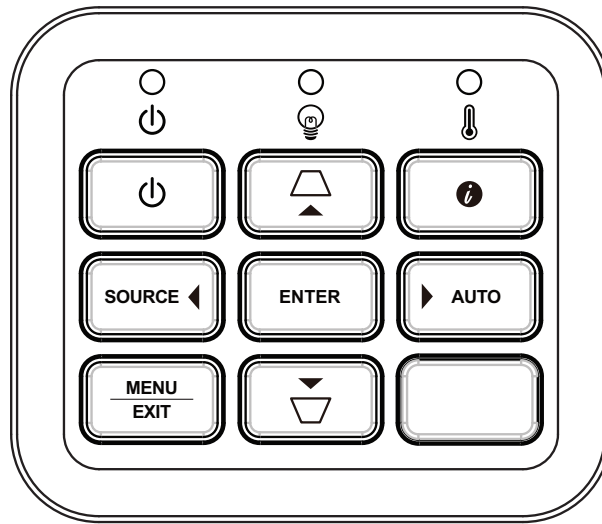
Projector



| Number | Description |
|--------|---------------|
| 1 | Keypad |
| 2 | Focus Ring |
| 3 | Zoom Ring |
| 4 | Front IR |
| 5 | Top IR |
| 6 | DC In |
| 7 | Lens |
| 8 | I/O Ports |
| 9 | Vent (inlet) |
| 10 | Vent (outlet) |
| 11 | Lens Shift |

NOTE: Do not block projector intake or exhaust vents.

Keypad

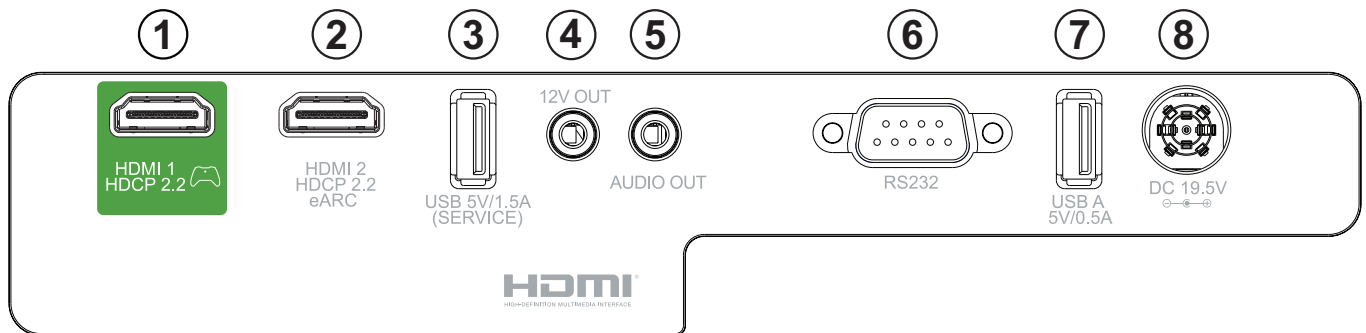


| Key | | Description |
|----------------------------|--------------------|--|
| | Power | Toggles the projector between standby mode and Power On. |
| | Keystone | Manually corrects distorted images resulting from an angled projection. |
| | Navigation | Selects the desired menu items and makes adjustments when the On-Screen Display (OSD) Menu is activated. |
| MENU EXIT | Menu/Exit | Opens/exits the On-Screen Display (OSD) Menu. |
| SOURCE | Source | Displays the input source selection bar. |
| | Information | Displays the INFORMATION menu. |
| ENTER | Enter | Enacts the selected On-Screen Display (OSD) Menu item when the OSD Menu is activated. |
| AUTO | Auto | Automatically determines the best picture timings for the displayed image. |

Indicator Lights

| Indicator Light | Description |
|-----------------|------------------------------|
| | Power indicator light |
| | Light source indicator light |
| | Temperature indicator light |

I/O Ports

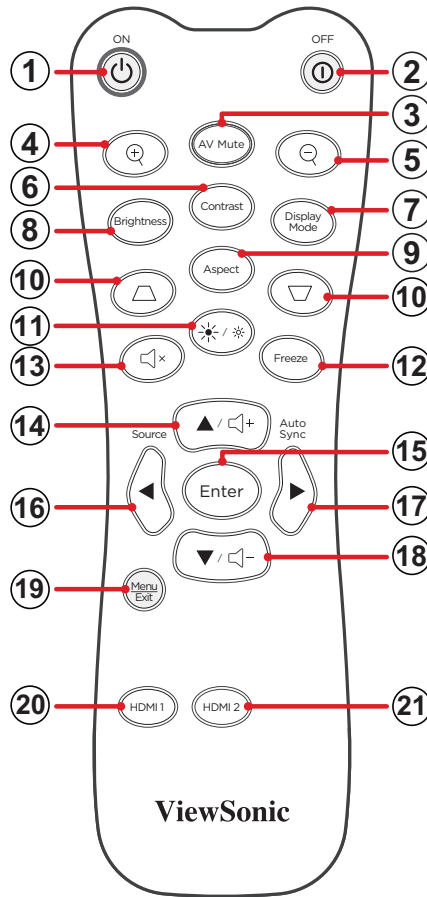


| Port | | Description |
|------|--------------------------------|--|
| 1 | HDMI 1 ¹ | HDMI port. |
| 2 | HDMI 2 ¹ | HDMI port ² . |
| 3 | USB (5V/1.5A Out) (Service) | USB Type A port for power and service. |
| 4 | 12V Trigger | 12V DC output terminal (500mA Out). |
| 5 | AUDIO OUT | Audio signal output socket. |
| 6 | RS-232 | RS-232 control port. |
| 7 | USB A 5V/0.5A | USB Type A port for power. |
| 8 | DC IN | DC IN socket. |












1- Supports HDCP 2.2.

2- Supports eARC.

Remote Control



| Button | | Description | |
|--------|---------------------|-------------|---|
| 1 | Power ON | | Turns the projector ON |
| 2 | Power OFF | | Turns the projector OFF |
| 3 | AV Mute | | Hides the screen picture and volume mute. |
| 4 | Zoom In | | Increases the projected image size. |
| 5 | Zoom Out | | Reduces the projected image size. |
| 6 | Contrast | | Displays the contrast selection bar. |
| 7 | Display Mode | | Displays the Color Mode selection bar. |
| 8 | Brightness | | Displays the brightness selection bar. |
| 9 | Aspect | | Displays the aspect ratio selection bar. |
| 10 | Keystone | | Manually correct distorted images. |

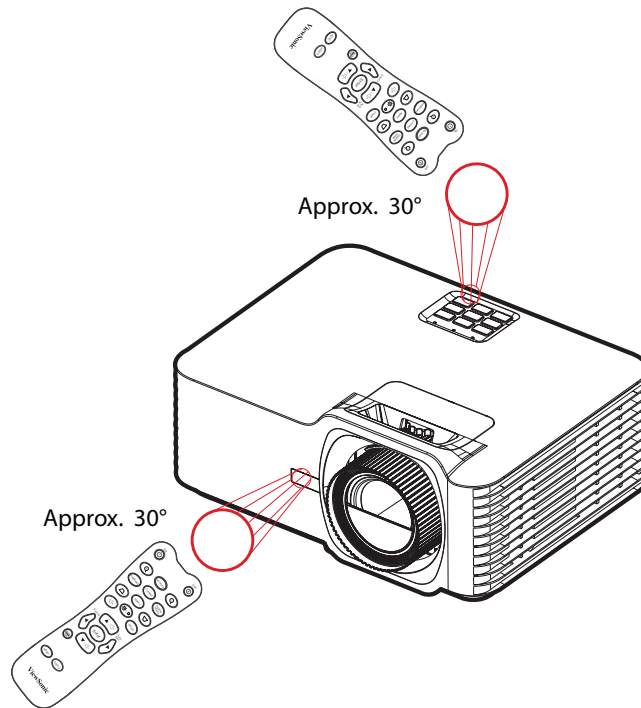
| Button | | Description | |
|--------|-------------------|---|--|
| 11 | Light Source Mode |  | Displays the Light Source Mode selection bar. |
| 12 | Freeze |  | Freeze the projected image. |
| 13 | Mute |  | Mute/unmute. |
| 14 | ▲/Volume Increase |  | <ul style="list-style-type: none"> • Navigate upwards. • Increase the volume level. |
| 15 | Enter |  | Confirms the selection. |
| 16 | ◀/Source |  | <ul style="list-style-type: none"> • Navigate to the left. • Displays the input source selection bar. |
| 17 | ▶/Auto Sync |  | <ul style="list-style-type: none"> • Navigate to the right. • Automatically determines the best picture timings for the displayed image. |
| 18 | ▼/Volume Decrease |  | <ul style="list-style-type: none"> • Navigate downwards. • Decrease the volume level. |
| 19 | Menu/Exit |  | <ul style="list-style-type: none"> • Turns the On-Screen Display (OSD) Menu On or Off. • Go back to a previous OSD Menu. • Exit and Save menu settings. |
| 20 | HDMI 1 |  | Select the HDMI 1 input source. |
| 21 | HDMI 2 |  | Select the HDMI 2 input source. |

Remote Control - Receiver Range

To ensure proper function of the remote control follow the steps below:

1. The remote control must be held at an angle within 30° perpendicular to the projector's IR remote control sensor(s).
2. The distance between the remote control and the sensor(s) should not exceed 8 m (26 ft.)

NOTE: Refer to the illustration for the location of the infrared (IR) remote control sensor(s).

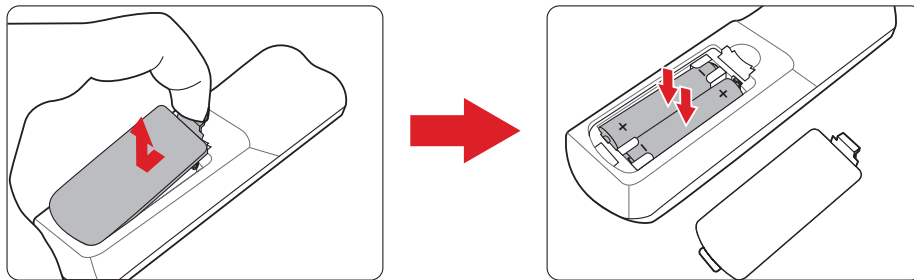


Remote Control - Replacing the Batteries

1. Remove the battery cover from the bottom of the remote control by pressing the finger grip and sliding it across.
2. Remove any existing batteries (if necessary) and install two AAA batteries.

NOTE: Observe the battery's polarities as indicated.

3. Replace the battery cover by aligning it with the base and pushing it back into position.



NOTE:

- Avoid leaving the remote control and batteries in excessive heat or a humid environment.
- Replace only with the same or equivalent type recommended by the battery manufacturer.
- If the batteries are drained or if you will not be using the remote control for an extended period of time, remove the batteries to avoid damage to the remote control.
- Dispose of the used batteries according to the manufacturer's instructions and local environment regulations for your region.

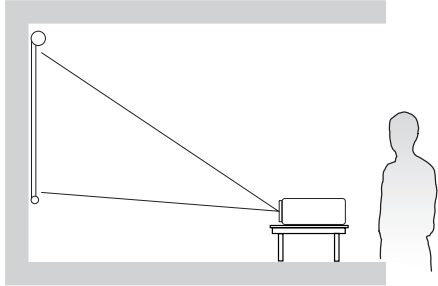
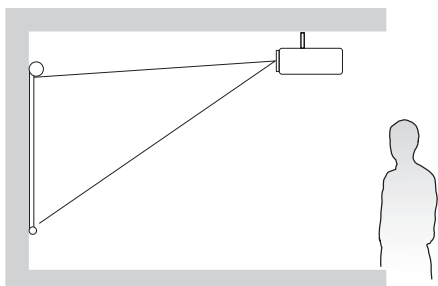
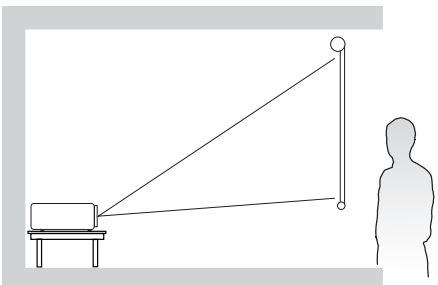
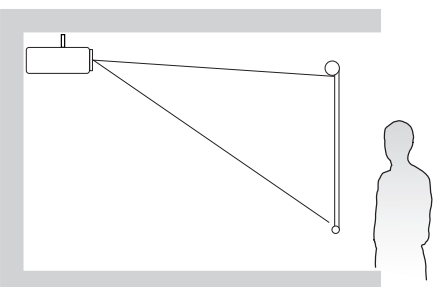
Initial Setup

Projection Location and Orientation

Personal preference and room layout will decide the installation location. Consider the following:

- Size and position of your screen.
- Location of a suitable power outlet.
- Location and distance between the projector and other equipment.

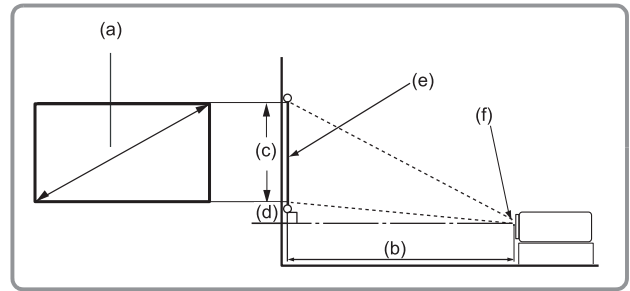
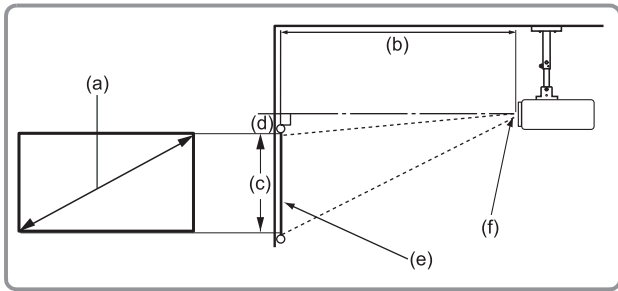
The projector is designed to be installed in one of the following locations:

| Location | |
|--|---|
| <p>Desk Front</p> <p>The projector is placed near the floor in front of the screen.</p> |  A diagram showing a projector on a desk in front of a screen. The projector is angled upwards to project onto the screen. A person is standing to the right of the screen, looking at the projection. |
| <p>Ceiling Front</p> <p>The projector is suspended upside-down from the ceiling in front of the screen.</p> |  A diagram showing a projector suspended from the ceiling in front of a screen. The projector is angled downwards to project onto the screen. A person is standing to the right of the screen, looking at the projection. |
| <p>Desk Rear¹</p> <p>The projector is placed near the floor behind the screen.</p> |  A diagram showing a projector on a desk behind a screen. The projector is angled upwards to project onto the screen. A person is standing to the right of the screen, looking at the projection. |
| <p>Ceiling Rear¹</p> <p>The projector is suspended upside-down from the ceiling behind the screen.</p> |  A diagram showing a projector suspended from the ceiling behind a screen. The projector is angled downwards to project onto the screen. A person is standing to the right of the screen, looking at the projection. |

¹ - A rear projection screen is required.

Projection Dimensions

- 16:9 Image on a 16:9 Screen



NOTE: (e) = Screen (f) = Center of Lens

| (a) Screen Size | | (b) Projection Distance | | | | (c) Image Height | | (d) Vertical Offset | | | |
|-----------------|------|-------------------------|------|---------|-------|------------------|------|---------------------|-----|---------|-----|
| | | Minimum | | Maximum | | | | Minimum | | Maximum | |
| in. | mm | in. | mm | in. | mm | in. | mm | in. | mm | in. | mm |
| 30 | 762 | 36.61 | 930 | 58.57 | 1488 | 14.71 | 374 | 0.51 | 13 | 2.74 | 69 |
| 40 | 1016 | 48.81 | 1240 | 78.09 | 1984 | 19.61 | 498 | 0.69 | 17 | 3.65 | 93 |
| 50 | 1270 | 61.01 | 1550 | 97.62 | 2479 | 24.51 | 623 | 0.86 | 22 | 4.56 | 116 |
| 60 | 1524 | 73.21 | 1860 | 117.14 | 2975 | 29.42 | 747 | 1.03 | 26 | 5.47 | 139 |
| 70 | 1778 | 85.41 | 2170 | 136.66 | 3471 | 34.32 | 872 | 1.20 | 31 | 6.38 | 162 |
| 80 | 2032 | 97.62 | 2479 | 156.19 | 3967 | 39.22 | 996 | 1.37 | 35 | 7.30 | 185 |
| 90 | 2286 | 109.82 | 2789 | 175.71 | 4463 | 44.12 | 1121 | 1.54 | 39 | 8.21 | 208 |
| 100 | 2540 | 122.02 | 3099 | 195.23 | 4959 | 49.03 | 1245 | 1.72 | 44 | 9.12 | 232 |
| 110 | 2794 | 134.22 | 3409 | 214.76 | 5455 | 53.93 | 1370 | 1.89 | 48 | 10.03 | 255 |
| 120 | 3048 | 146.22 | 3719 | 234.28 | 5951 | 58.83 | 1494 | 2.06 | 52 | 10.94 | 278 |
| 130 | 3302 | 158.63 | 4029 | 253.80 | 6447 | 63.73 | 1619 | 2.23 | 57 | 11.85 | 301 |
| 140 | 3556 | 170.83 | 4339 | 273.33 | 6942 | 68.64 | 1743 | 2.40 | 61 | 12.77 | 324 |
| 150 | 3810 | 183.03 | 4649 | 292.85 | 7438 | 73.54 | 1868 | 2.57 | 65 | 13.68 | 347 |
| 200 | 5080 | 244.04 | 6199 | 390.47 | 9918 | 98.05 | 2491 | 3.43 | 87 | 18.24 | 463 |
| 250 | 6350 | 305.05 | 7748 | 488.08 | 12397 | 122.57 | 3113 | 4.29 | 109 | 22.80 | 579 |
| 300 | 7620 | 366.06 | 9298 | 585.70 | 14877 | 147.08 | 3736 | 5.15 | 131 | 27.36 | 695 |

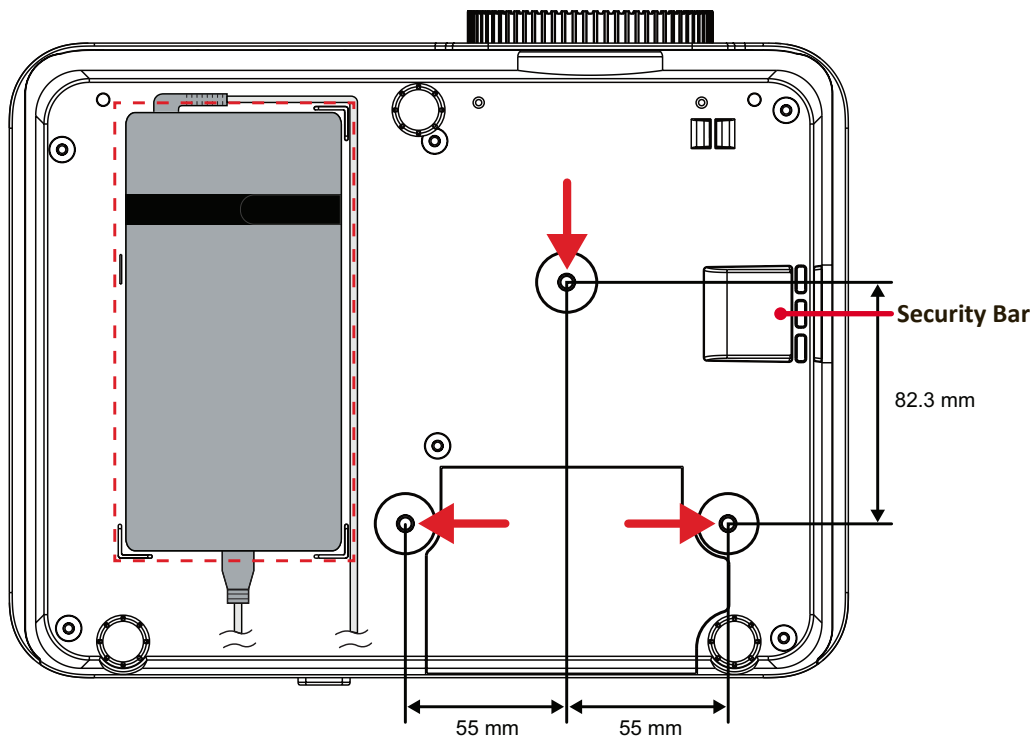
NOTE:

- These figures are for reference purposes only. Please refer to the actual projector for the precise dimensions.
- It is recommended that if you intend to permanently install the projector to physically test the projection size and distance using the actual projector before you permanently install it.

Mounting the Projector

NOTE: If you buy a third party mount, please use the correct screw size. Screw size can vary depending on the thickness of the mounting plate.

1. To ensure the most secure installation, please use a ViewSonic® wall or ceiling mount.
2. Ensure the screws used to attach the mount to the projector meet the following specifications:
 - Screw type: M4 x 8
 - Maximum Screw Length: 8 mm
3. Place the power adapter within the designated area and secure it with a cable strap.



CAUTION:

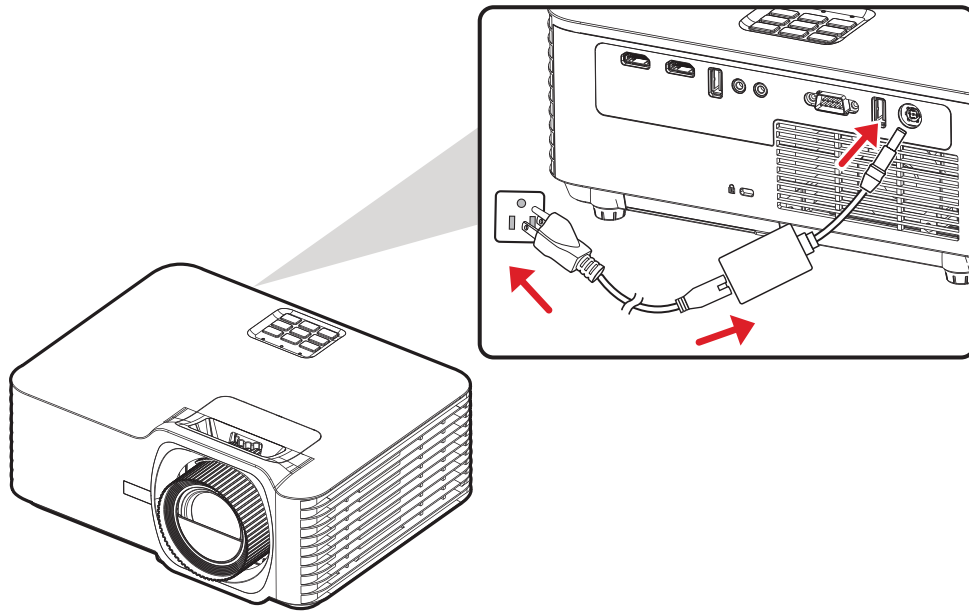
- Avoid installing the projector near a heat source or air conditioner.
- Keep at least a 10 cm (3.9 in.) gap between the ceiling and the bottom of the projector.

Using the Security Bar

To prevent the projector from being stolen, use a security slot locking device to secure the projector to a fixed object. The security slot can also be used as a safety anchor if the projector is mounted to the ceiling.

Making Connections

Connecting to Power



1. Connect the power cord to the power adapter.
2. Connect the power adapter to the DC IN jack at the rear of the projector.
3. Plug the power cord into a power outlet.

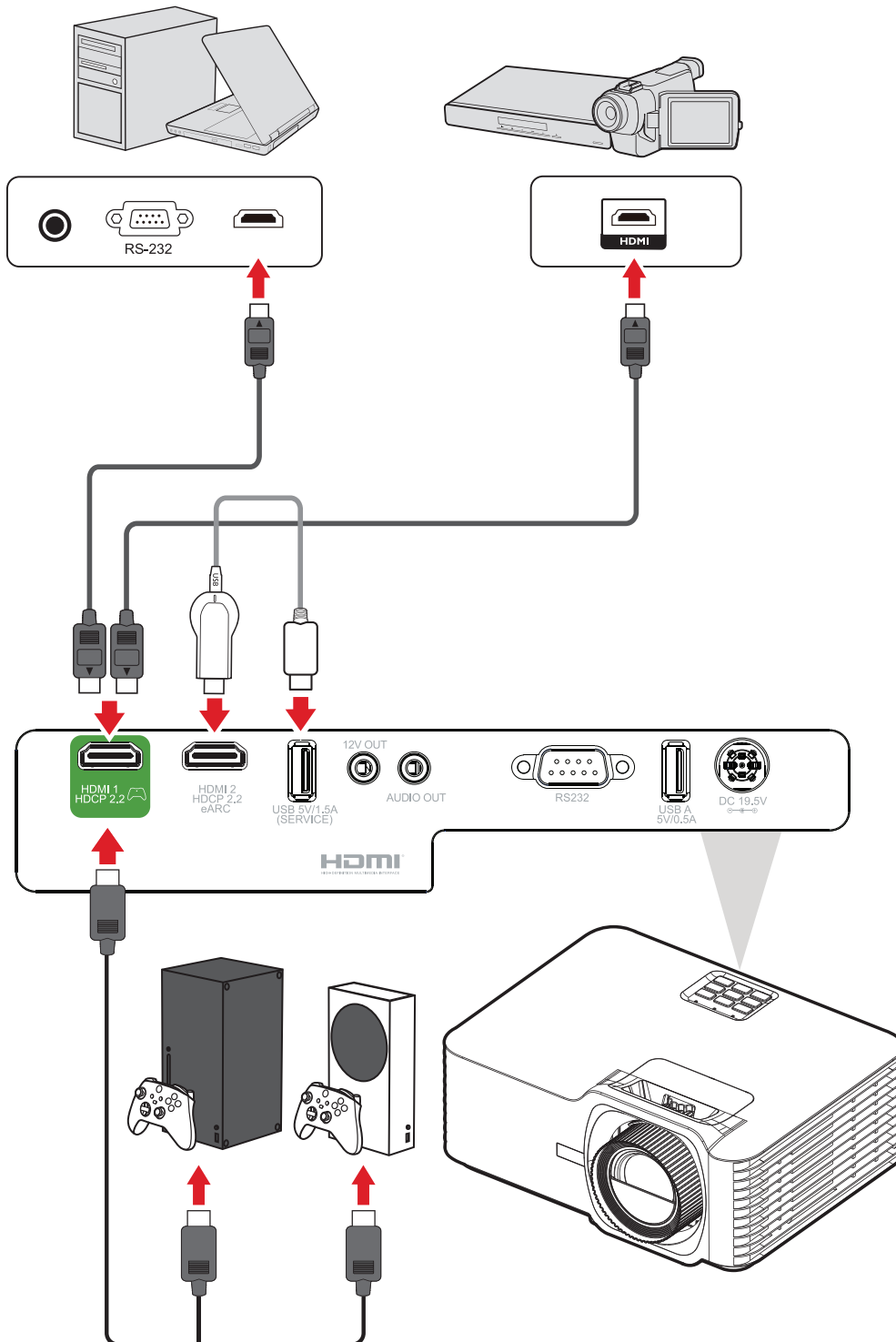
NOTE: When installing the projector, incorporate a readily accessible disconnect device in the fixed wiring, or connect the power plug to an easily accessible outlet near the unit. If a fault should occur during operation of the projector, use the disconnect device to switch off the power supply, or disconnect the power plug.

Connecting to External Devices

HDMI Connection

Connect one end of an HDMI cable to the HDMI port of your video device. Then connect the other end of the cable to the **HDMI 1** or **HDMI 2** port (each support HDMI 2.0/HDCP 2.2) of the projector.

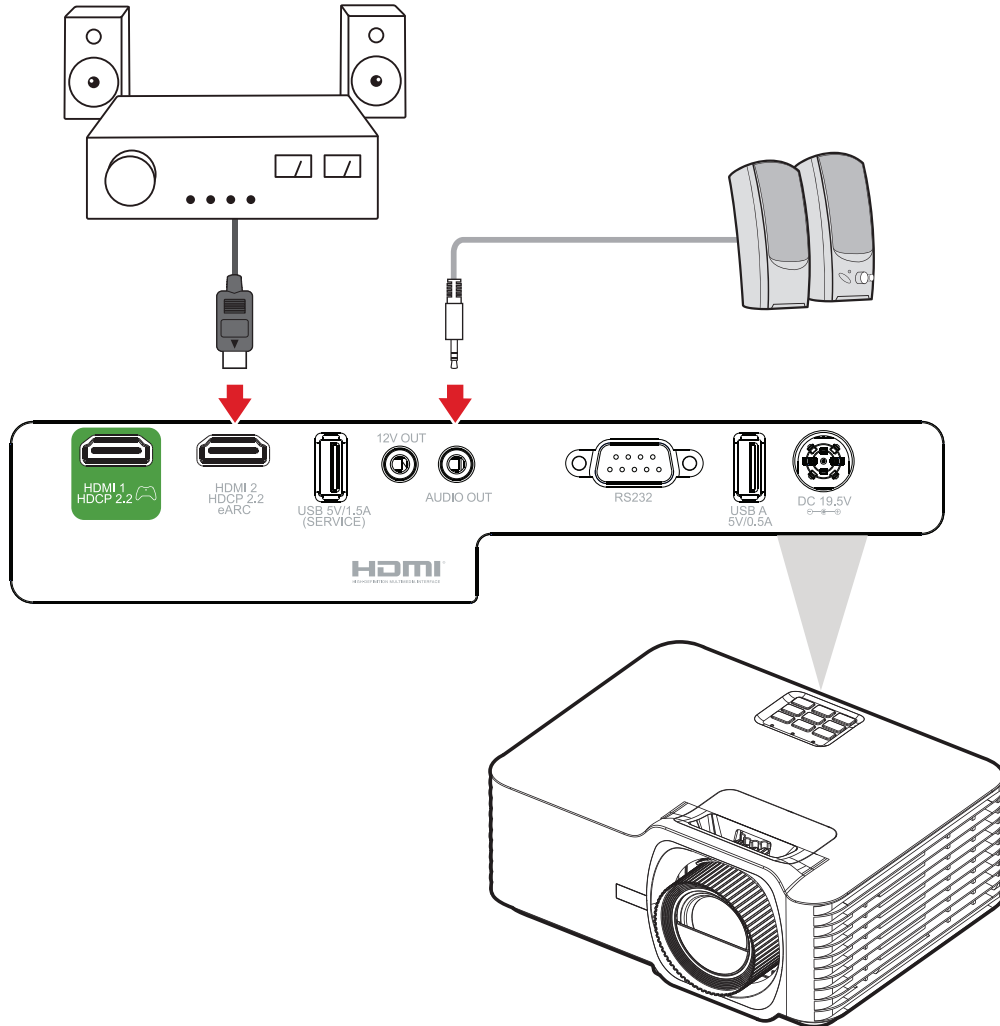
NOTE: The **HDMI 2** port supports eARC.



Audio Connection

You can connect to various external sound delivery devices via the **AUDIO OUT** and **HDMI 2** ports.

NOTE: The **HDMI 2** port supports eARC. It can deliver sound to external devices when connected.

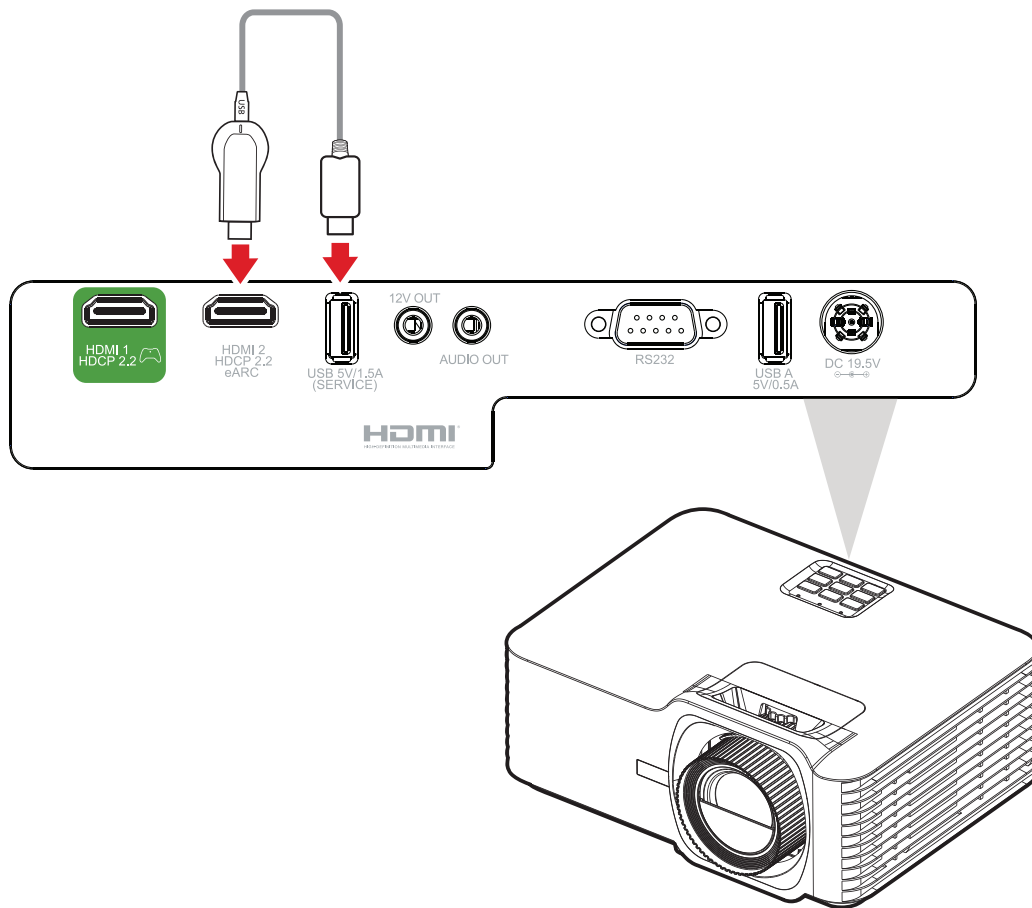


USB Connection

USB Type A Connection

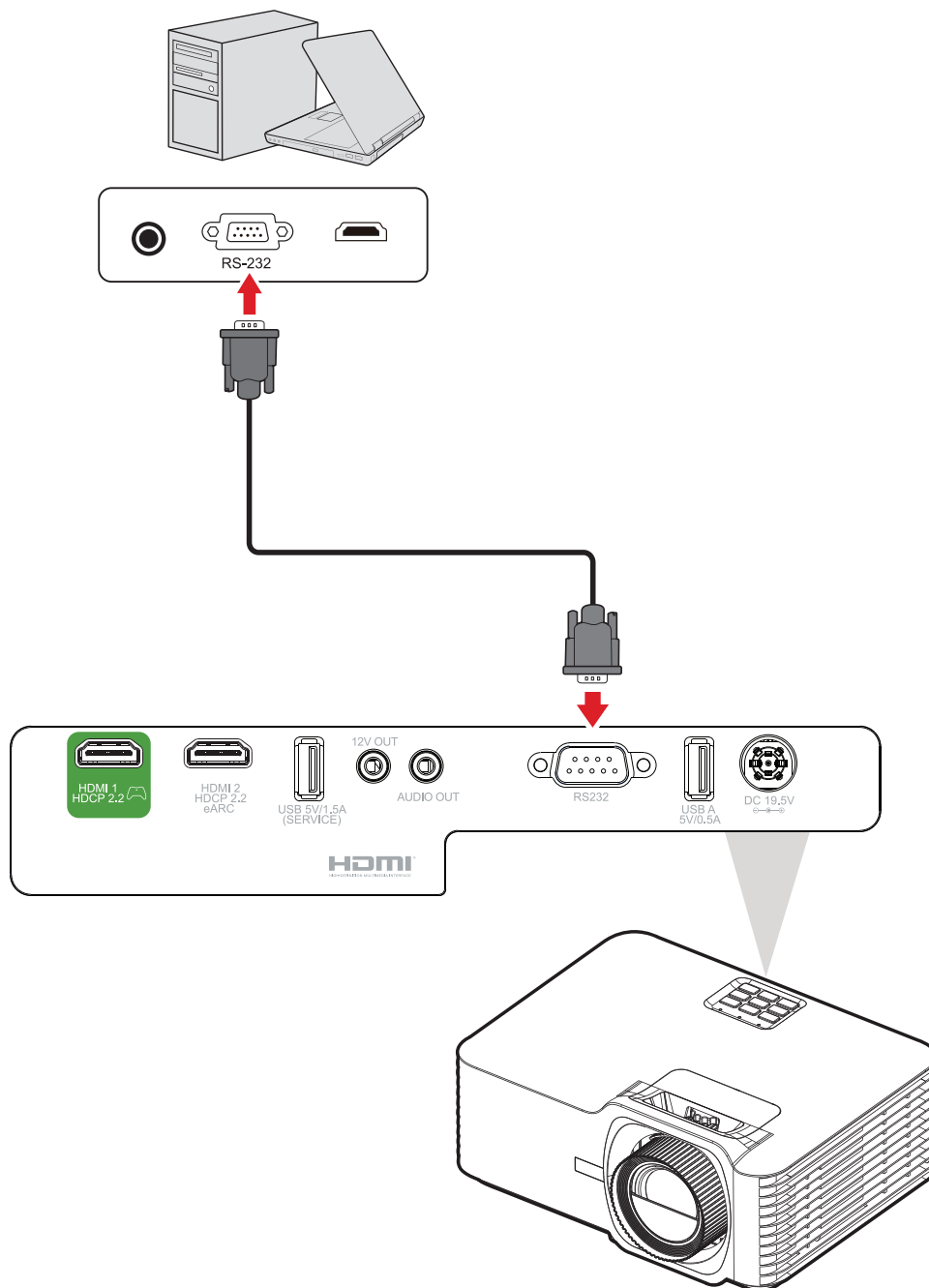
The USB port is for supplying power (e.g., dongles) and service needs.

NOTE: The USB port does not supply power when the projector is in standby mode.



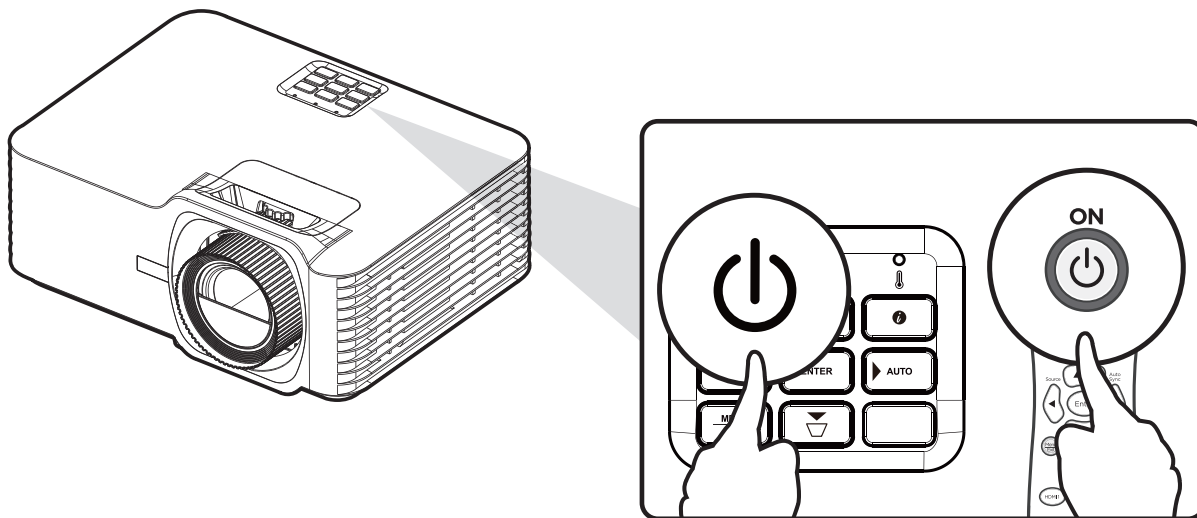
RS-232 Connection

When you use a RS-232 serial port cable to connect the projector to an external computer certain functions can be controlled remotely by a computer, including Power On/Off, Volume adjustment, Input select, Brightness, and more.



Using the Projector

Starting Up the Projector



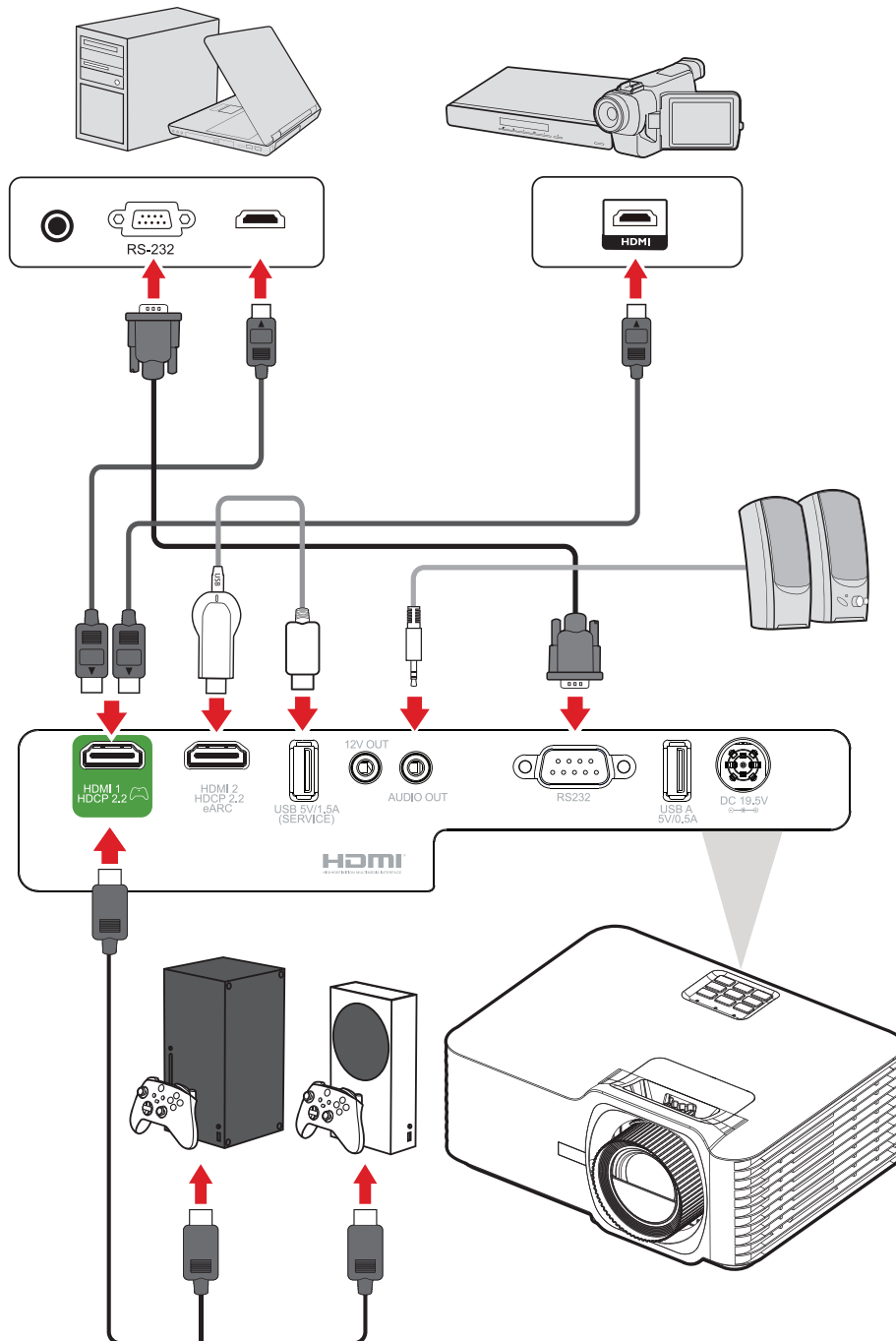
1. Make sure the projector's power cord is properly connected to a power outlet.
2. Press the **Power** button on the projector or remote control to turn on the projector.

NOTE:

- The Power Indicator Light will be flashing blue during startup.
- The first time the projector is turned on, you will be prompted to select the preferred language and projection orientation.

Selecting an Input Source

The projector can be connected to multiple devices at the same time. However, it can only display one full screen at a time.



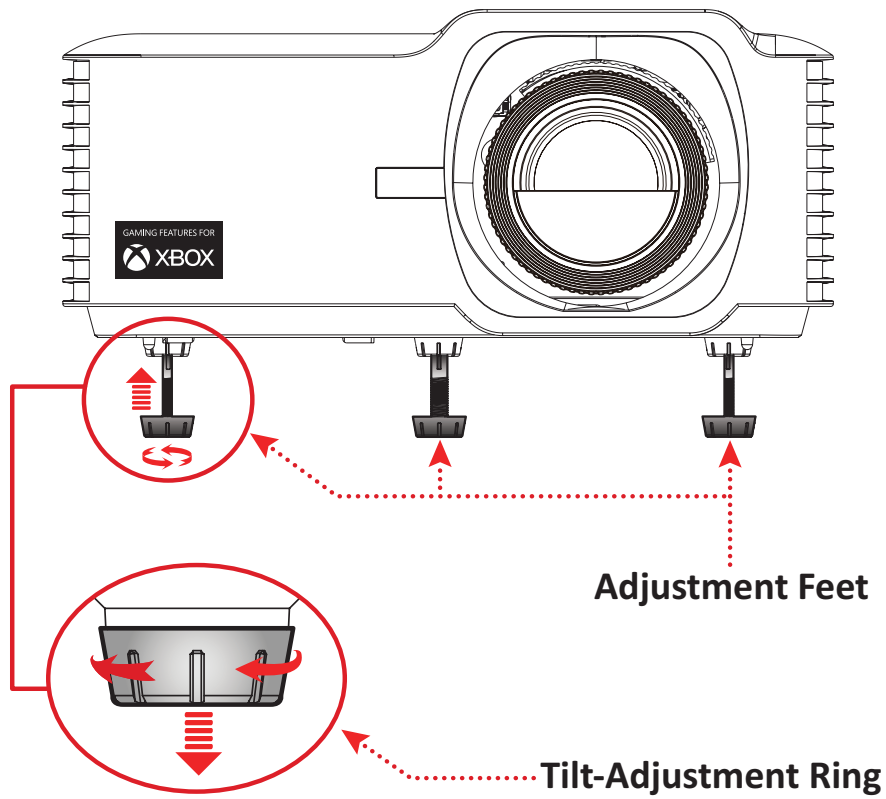
When **Auto Source** is on, the projector will automatically search for input sources. If multiple sources are connected, press the **Source** button on the projector or remote control to select the desired input.

NOTE: Make sure the connected sources are also turned on.

Adjusting the Projected Image

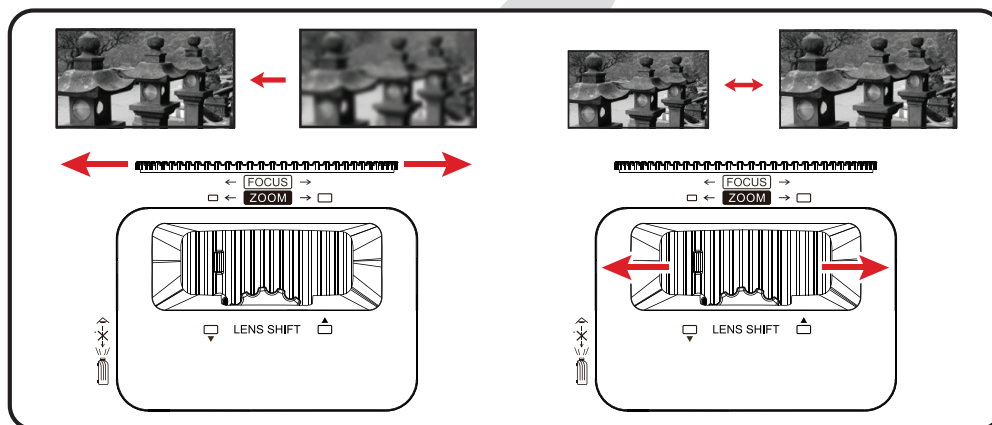
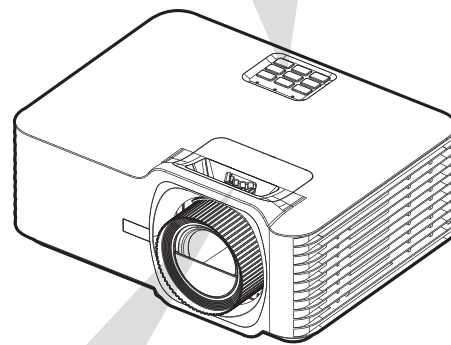
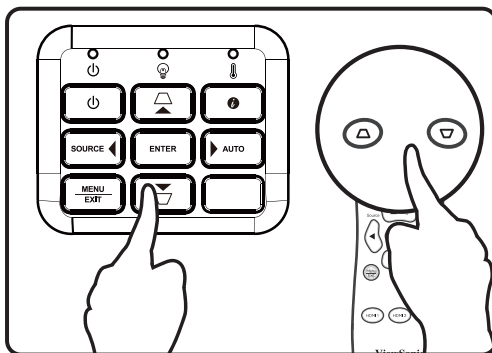
Adjusting the Projector's Height and Projection Angle

The projector is equipped with three adjustment feet. Adjusting the feet will change the projector's height and the vertical projection angle.



Adjusting the Focus, Keystone, Lens Shift, and Zoom

You can improve and adjust the clarity and position of the image by adjusting the **Focus Ring**, **Keystone Keys**, **Lens Shift dial** or **Zoom Ring**.



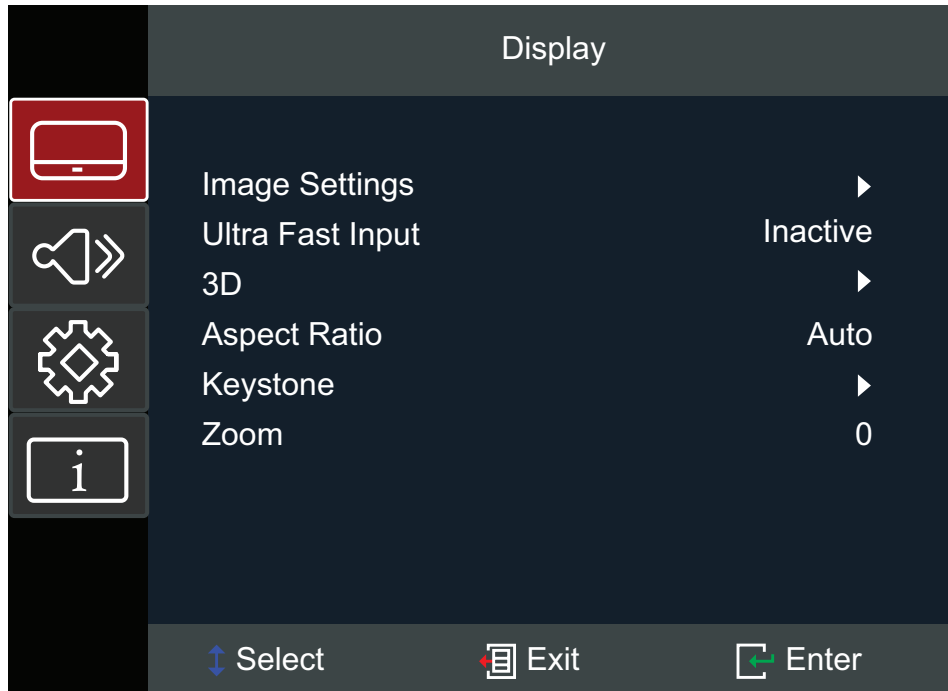
Shutting Down the Projector

1. Press the **Power** button on the projector or remote control and a “power off message” will appear.
2. Press the **Power** button again to confirm and shut down the projector.
3. The Power Indicator Light will turn solid red and enter standby mode.

Menu Operation

On-Screen Display (OSD) Menu

The projector has multilingual on-screen display menus that allow you to make image adjustments and change a variety of settings.



| Menu | | Description |
|-------------|--|--|
| Display | | Adjust Image, Ultra Fast Input, 3D, Aspect Ratio, Zoom, and Keystone settings. |
| Audio | | Adjust the volume level, audio mode, or mute. |
| Setup | | Adjust Projection, Power, Security, Language, Input Source, etc. settings. |
| Information | | View projector information. |

Menu Navigation

The projector has multilingual on-screen display menus that allow for image and settings adjustment.

1. To open the On-Screen Display (OSD) Menu, press the **Menu/Exit** button on the projector or the remote control.
2. When the OSD is displayed, use the **Navigation** buttons (**▲/▼**) to select any item in the main menu. While making a selection on a particular page, press the **Enter** button on the projector or the remote control to enter a sub-menu.
3. Use the **Navigation** buttons (**▲/▼/◀/▶**) to select the desired item in the sub-menu and then press **Enter** to view further settings. Adjust the settings by using the **Navigation** buttons (**▲/▼/◀/▶**).
4. Select the next item to be adjusted in the sub-menu and adjust as described above.
5. Press **Enter** to confirm, and the screen will return to the main menu.
6. To exit, press the **Menu/Exit** button again. The OSD menu will close and the projector will automatically save the new settings.

On-Screen Display (OSD) Menu Tree

| Main Menu | Sub-menu | Menu Option | | |
|------------------|----------------|-------------------|----------------|--|
| Display | Image Settings | Color Mode | TV (BT.2020) | |
| | | | Brightest | |
| | | | HDR | |
| | | | HLG | |
| | | | Movie | |
| | | | Gaming | |
| | | | Low Blue Light | |
| | | | Rec.709 | |
| | | | User | |
| | | | 3D | |
| | Brightness | (-/+ , -50~50) | | |
| | Contrast | (-/+ , -50~50) | | |
| | Sharpness | (-/+ , 1~15) | | |
| | Color | (-/+ , -50~50) | | |
| | Tint | (-/+ , -50~50) | | |
| | Gamma | 1.8 | | |
| | | 2.0 | | |
| | | 2.2 | | |
| | | 2.35 | | |
| | | 2.5 | | |
| | | Cube | | |
| | | sRGB | | |
| | Color Settings | Color Temperature | 6500K | |
| 7500K | | | | |
| 8500K | | | | |
| 9300K | | | | |
| Color Management | | Color | Red | |
| | | | Green | |
| | | | Blue | |
| | | | Cyan | |
| | | | Yellow | |
| | | | Magenta | |
| White | | | | |

| Main Menu | Sub-menu | Menu Option | | | |
|-----------|------------------|-------------------|--------------------|--------------------|---------------|
| Display | Image Settings | Color Settings | Color Management | Hue / R (*) | (-/+, -50~50) |
| | | | | Saturation / G (*) | (-/+, -50~50) |
| | | | | Gain / B (*) | (-/+, -50~50) |
| | | | | Reset | |
| | | | Exit | | |
| | | | Color Space | Auto | |
| | | | | RGB (0~255) | |
| | | | | RGB (16~235) | |
| | | YUV | | | |
| | | Light Source Mode | Dynamic Black | | |
| | | | | Eco | |
| | | | Light Source Power | 100%~50% | |
| | Reset | | | | |
| | Ultra Fast Input | Active | | | |
| | | Inactive | | | |
| | 3D | 3D Mode | Off | | |
| | | | On | | |
| | | 3D Format | Auto | | |
| | | | SBS | | |
| | | | Top and Bottom | | |
| | | | Frame Sequential | | |
| | | 3D Sync Invert | Off | | |
| | | | On | | |
| | Aspect Ratio | 4:3 | | | |
| 16:9 | | | | | |
| Native | | | | | |
| Auto | | | | | |

| Main Menu | Sub-menu | Menu Option | | |
|-----------|--------------|--------------|---------------|--|
| Display | Keystone | H. Keystone | (-/+, -30~30) | |
| | | V. Keystone | (-/+, -30~30) | |
| | | Four Corners | Top-Left | |
| | | | Top-Right | |
| | | | Bottom-Left | |
| | | | Bottom-Right | |
| | | Warping | | |
| | Reset | | | |
| Zoom | (-/+, -5~25) | | | |
| Audio | Volume | (-/+, 0~10) | | |
| | Mute | Off | | |
| | | On | | |
| | HDMI eARC | On | | |
| | | Off | | |

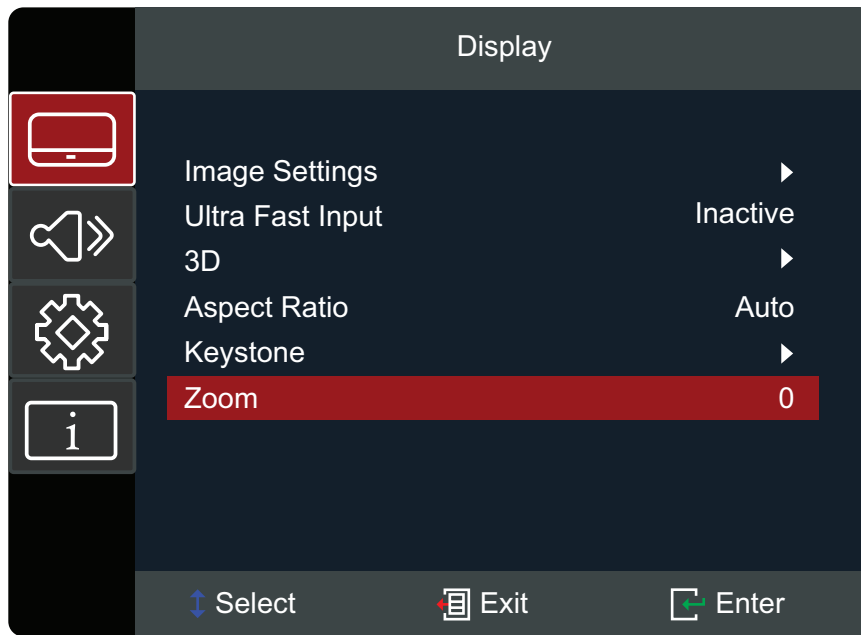
| Main Menu | Sub-menu | Menu Option | | |
|-----------|--------------------|--------------------------|--------------|--|
| Setup | Projection | Desk Front | | |
| | | Desk Rear | | |
| | | Ceiling Front | | |
| | | Ceiling Rear | | |
| | Power Settings | Direct Power On | Off | |
| | | | On | |
| | | Signal Power On | Off | |
| | On | | | |
| | Auto Power Off | (-/+ , 0~180) minutes | | |
| | Security | Power On Lock | Off | |
| | | | On | |
| | Change Password | | | |
| | HDMI CEC | HDMI Link | Off | |
| | | | On | |
| | | XBOX Mode | Off | |
| | | | On | |
| | Test Pattern | Test Pattern | Off | |
| | | | Green Grid | |
| | | | Magenta Grid | |
| | | | White Grid | |
| White | | | | |
| Test Card | | | | |

| Main Menu | Sub-menu | Menu Option | |
|---------------|------------------|-------------|------------------|
| Setup | Options | Language | English |
| | | | Deutsch |
| | | | Français |
| | | | Italiano |
| | | | Español |
| | | | Português |
| | | | Polski |
| | | | Nederlands |
| | | | Svenska |
| | | | Norsk |
| | | | Suomi |
| | | | ελληνικά |
| | | | 繁體中文 |
| | | | 簡體中文 |
| | | | 日本語 |
| | | | 한국어 |
| | | | Русский |
| | | | Čeština |
| | | | يبرع |
| | | | ไทย |
| | | | Türkçe |
| | | | Tiếng Việt |
| | | | Bahasa Indonesia |
| | High Altitude | Off | |
| | | On | |
| | Auto Source | Off | |
| | | On | |
| Keypad Lock | Off | | |
| | On | | |
| Splash Screen | Default | | |
| | Neutral | | |
| Reset | Reset to Default | | |

| Main Menu | Sub-menu | Menu Option | |
|--------------------|--------------------|-------------|--|
| Information | Serial Number | | |
| | Source | | |
| | Resolution | | |
| | Refresh Rate | | |
| | Light Source Hours | | |
| | Color Mode | | |
| | Light Source Mode | | |
| | Firmware Version | System | |
| | MCU | | |

Menu Options

Display Menu



| Menu | Description | | | | | | | | | | | | | | | | | | | | | | |
|-----------------------|---|------|-------------|---------------------|--|------------------|---|------------|---|------------|---|--------------|---|---------------|--|-----------------------|---|----------------|-----------------------------------|-------------|-------------------------|-----------|--|
| Image Settings | <p><u>Color Mode</u> There are several predefined color modes that you can choose from to suit your viewing preference.</p> <table border="1" data-bbox="608 1099 1396 1982"> <thead> <tr> <th>Mode</th> <th>Description</th> </tr> </thead> <tbody> <tr> <td>TV (BT.2020)</td> <td>Designed for normal circumstances in a daylight environment.</td> </tr> <tr> <td>Brightest</td> <td>Suitable for bright, well-lit environments.</td> </tr> <tr> <td>HDR</td> <td>Enable for HDR supported content and darker blacks, brighter highlights, and vivid color.</td> </tr> <tr> <td>HLG</td> <td>Enable for HLG supported content and darker blacks, brighter highlights, and vivid color.</td> </tr> <tr> <td>Movie</td> <td>Provides the best balance of detail and colors for watching movies.</td> </tr> <tr> <td>Gaming</td> <td>Optimizes your projector for maximum contrast and vivid colors allowing you to see shadow detail when playing games.</td> </tr> <tr> <td>Low Blue Light</td> <td>Block high-energy blue light for a more comfortable viewing experience.</td> </tr> <tr> <td>Rec.709</td> <td>Displays the Rec.709 color gamut.</td> </tr> <tr> <td>User</td> <td>User's custom settings.</td> </tr> <tr> <td>3D</td> <td>Optimized for 3D content. NOTE: 3D glasses are needed.</td> </tr> </tbody> </table> | Mode | Description | TV (BT.2020) | Designed for normal circumstances in a daylight environment. | Brightest | Suitable for bright, well-lit environments. | HDR | Enable for HDR supported content and darker blacks, brighter highlights, and vivid color. | HLG | Enable for HLG supported content and darker blacks, brighter highlights, and vivid color. | Movie | Provides the best balance of detail and colors for watching movies. | Gaming | Optimizes your projector for maximum contrast and vivid colors allowing you to see shadow detail when playing games. | Low Blue Light | Block high-energy blue light for a more comfortable viewing experience. | Rec.709 | Displays the Rec.709 color gamut. | User | User's custom settings. | 3D | Optimized for 3D content. NOTE: 3D glasses are needed. |
| Mode | Description | | | | | | | | | | | | | | | | | | | | | | |
| TV (BT.2020) | Designed for normal circumstances in a daylight environment. | | | | | | | | | | | | | | | | | | | | | | |
| Brightest | Suitable for bright, well-lit environments. | | | | | | | | | | | | | | | | | | | | | | |
| HDR | Enable for HDR supported content and darker blacks, brighter highlights, and vivid color. | | | | | | | | | | | | | | | | | | | | | | |
| HLG | Enable for HLG supported content and darker blacks, brighter highlights, and vivid color. | | | | | | | | | | | | | | | | | | | | | | |
| Movie | Provides the best balance of detail and colors for watching movies. | | | | | | | | | | | | | | | | | | | | | | |
| Gaming | Optimizes your projector for maximum contrast and vivid colors allowing you to see shadow detail when playing games. | | | | | | | | | | | | | | | | | | | | | | |
| Low Blue Light | Block high-energy blue light for a more comfortable viewing experience. | | | | | | | | | | | | | | | | | | | | | | |
| Rec.709 | Displays the Rec.709 color gamut. | | | | | | | | | | | | | | | | | | | | | | |
| User | User's custom settings. | | | | | | | | | | | | | | | | | | | | | | |
| 3D | Optimized for 3D content. NOTE: 3D glasses are needed. | | | | | | | | | | | | | | | | | | | | | | |

| Menu | Description |
|--|---|
| <p style="text-align: center;">Image Settings</p> | <p><u>Brightness</u> The higher the value, the brighter the image. Lower values will result in a darker image.</p> <p><u>Contrast</u> Use this to set the peak white level after you have previously adjusted the Brightness setting to suit your selected input and viewing environment.</p> <p><u>Sharpness</u> A high value results in a sharper picture; a low value softens the picture.</p> <p><u>Color</u> Adjust an image from black and white to fully saturated color.</p> <p><u>Tint</u> The higher the value, the more greenish the picture becomes. The lower the value, the more reddish the picture becomes.</p> <p><u>Gamma</u> Reflects the relationship between input source and picture brightness.</p> |

| Menu | Description | | | | | | | | |
|---|---|--|-------------|--------------------------|--|-------------------------|--|---------------------------|---|
| Image Settings | <u>Color Settings</u> | | | | | | | | |
| | <table border="1" style="width: 100%; border-collapse: collapse;"> <thead> <tr> <th style="width: 50%; text-align: center;">Setting</th> <th style="width: 50%; text-align: center;">Description</th> </tr> </thead> <tbody> <tr> <td data-bbox="608 282 884 365">Color Temperature</td> <td data-bbox="884 282 1396 365">Select from 6500K, 7500K, 8500K, and 9300K.</td> </tr> <tr> <td data-bbox="608 365 884 1050" style="text-align: center;">Color Management</td> <td data-bbox="884 365 1396 1050"> <p>Only in permanent installations with controlled lighting levels such as: boardrooms, lecture halls, or home theaters should Color Matching be considered.</p> <p>Color Matching provides fine color control adjustment to allow for more accurate color reproduction, should you require it.</p> <p>If you have purchased a test disc, which contains various color test patterns and can be used to test the color presentation on monitors, TVs, projectors, etc., you can project any image from the disc on the screen and enter the Color Matching menu to make adjustments.</p> </td> </tr> <tr> <td data-bbox="608 1050 884 1133">Color Space</td> <td data-bbox="884 1050 1396 1133">Select from Auto, RGB (0~255), RGB (16~235), and YUV color space.</td> </tr> </tbody> </table> | Setting | Description | Color Temperature | Select from 6500K, 7500K, 8500K, and 9300K. | Color Management | <p>Only in permanent installations with controlled lighting levels such as: boardrooms, lecture halls, or home theaters should Color Matching be considered.</p> <p>Color Matching provides fine color control adjustment to allow for more accurate color reproduction, should you require it.</p> <p>If you have purchased a test disc, which contains various color test patterns and can be used to test the color presentation on monitors, TVs, projectors, etc., you can project any image from the disc on the screen and enter the Color Matching menu to make adjustments.</p> | Color Space | Select from Auto, RGB (0~255), RGB (16~235), and YUV color space. |
| | Setting | Description | | | | | | | |
| | Color Temperature | Select from 6500K, 7500K, 8500K, and 9300K. | | | | | | | |
| | Color Management | <p>Only in permanent installations with controlled lighting levels such as: boardrooms, lecture halls, or home theaters should Color Matching be considered.</p> <p>Color Matching provides fine color control adjustment to allow for more accurate color reproduction, should you require it.</p> <p>If you have purchased a test disc, which contains various color test patterns and can be used to test the color presentation on monitors, TVs, projectors, etc., you can project any image from the disc on the screen and enter the Color Matching menu to make adjustments.</p> | | | | | | | |
| | Color Space | Select from Auto, RGB (0~255), RGB (16~235), and YUV color space. | | | | | | | |
| | <u>Light Source Mode</u> | | | | | | | | |
| | <table border="1" style="width: 100%; border-collapse: collapse;"> <thead> <tr> <th style="width: 50%; text-align: center;">Mode</th> <th style="width: 50%; text-align: center;">Description</th> </tr> </thead> <tbody> <tr> <td data-bbox="608 1245 884 1368" style="text-align: center;">Dynamic Black</td> <td data-bbox="884 1245 1396 1368">Automatically adjust the picture brightness in order to give optimum contrast performance.</td> </tr> <tr> <td data-bbox="608 1368 884 1451" style="text-align: center;">Eco</td> <td data-bbox="884 1368 1396 1451">Dim the light output, lowering power consumption.</td> </tr> <tr> <td data-bbox="608 1451 884 1534" style="text-align: center;">Light Source Power</td> <td data-bbox="884 1451 1396 1534">Select the power percentage (50%~100%) for brightness mode.</td> </tr> </tbody> </table> | Mode | Description | Dynamic Black | Automatically adjust the picture brightness in order to give optimum contrast performance. | Eco | Dim the light output, lowering power consumption. | Light Source Power | Select the power percentage (50%~100%) for brightness mode. |
| | Mode | Description | | | | | | | |
| | Dynamic Black | Automatically adjust the picture brightness in order to give optimum contrast performance. | | | | | | | |
| Eco | Dim the light output, lowering power consumption. | | | | | | | | |
| Light Source Power | Select the power percentage (50%~100%) for brightness mode. | | | | | | | | |
| <u>Reset</u> | | | | | | | | | |
| <p>Return current display mode settings (Brightness, Contrast, Sharpness, Color, Tint, Gamma, Color Temperature, Color Management, Color Space, Light Source Mode) to default values.</p> | | | | | | | | | |

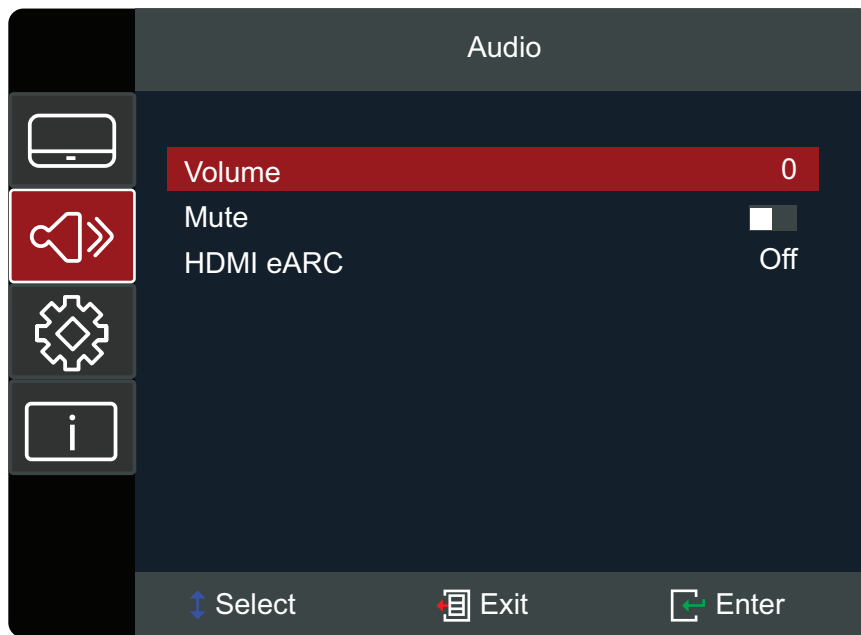
| Menu | Description | | | | | | | | | | |
|--------------------------------|--|--------|-------------|-------------|---|------------|---------------------------------|-----------------------|-----------------------------------|-------------------------|-------------------------------------|
| <p>Ultra Fast Input</p> | <p>This function is favorable to frame rate reducing. Quick response time in native timing can be achieved. When enabled, the following settings (if applicable) will return to factory preset values and disabled: Warping, Keystone, Four corners., Aspect Ratio, Zoom.</p> <p>NOTE: This function is only available when a 4K@60Hz, 1440P@60/120Hz and 1080P@60/120/240Hz input signal is selected. If you want to adjust Warping, Keystone, Four corners, Aspect Ratio, or Zoom, please disable Ultra Fast input.</p> | | | | | | | | | | |
| <p>3D</p> | <p><u>3D Mode</u> Enable or disable the 3D function.</p> <p><u>3D Format</u> Select the 3D content format.</p> <p>NOTE: A Blu-ray 3D source will be detected automatically, and options will not be selectable.</p> <table border="1" data-bbox="619 913 1406 1216"> <thead> <tr> <th data-bbox="619 913 892 958">Option</th> <th data-bbox="892 913 1406 958">Description</th> </tr> </thead> <tbody> <tr> <td data-bbox="619 958 892 1081">Auto</td> <td data-bbox="892 958 1406 1081">When a 3D identification signal is detected, the 3D format is selected automatically.</td> </tr> <tr> <td data-bbox="619 1081 892 1126">SBS</td> <td data-bbox="892 1081 1406 1126">Display in Side-by-Side format.</td> </tr> <tr> <td data-bbox="619 1126 892 1171">Top and Bottom</td> <td data-bbox="892 1126 1406 1171">Display in Top and Bottom format.</td> </tr> <tr> <td data-bbox="619 1171 892 1216">Frame Sequential</td> <td data-bbox="892 1171 1406 1216">Display in Frame Sequential format.</td> </tr> </tbody> </table> <p><u>3D Sync Invert</u> Enable or disable the 3D Sync Invert function.</p> | Option | Description | Auto | When a 3D identification signal is detected, the 3D format is selected automatically. | SBS | Display in Side-by-Side format. | Top and Bottom | Display in Top and Bottom format. | Frame Sequential | Display in Frame Sequential format. |
| Option | Description | | | | | | | | | | |
| Auto | When a 3D identification signal is detected, the 3D format is selected automatically. | | | | | | | | | | |
| SBS | Display in Side-by-Side format. | | | | | | | | | | |
| Top and Bottom | Display in Top and Bottom format. | | | | | | | | | | |
| Frame Sequential | Display in Frame Sequential format. | | | | | | | | | | |

NOTE: This projector is a 3D ready projector with DLP-Link 3D solution. Please make sure your 3D glasses are for DLP-Link 3D. This projector supports frame sequential (page-flip) 3D via the **HDMI 1/HDMI 2** ports. For the best performance, 1920 x 1080 resolution is recommended. Please note that 4K (3840 x 2160) resolution is not supported in 3D mode.

| Menu | Description | | | | | | | | | | |
|--|---|---|-------------|------------|---|-------------|---|---------------|--|-------------|---|
| <p style="text-align: center;">Aspect Ratio</p> | <p>Select the aspect ratio of the projected image.</p> <table border="1" data-bbox="609 226 1398 1294"> <thead> <tr> <th data-bbox="609 226 884 275">Aspect Ratio</th> <th data-bbox="884 226 1398 275">Description</th> </tr> </thead> <tbody> <tr> <td data-bbox="609 275 884 548" style="text-align: center;">4:3</td> <td data-bbox="884 275 1398 548">Scales an image so that it is displayed in the center of the screen with a 4:3 aspect ratio. This is most suitable for 4:3 images like computer monitors, standard definition TV, and 4:3 aspect DVD movies, as it displays them without aspect alteration.</td> </tr> <tr> <td data-bbox="609 548 884 784" style="text-align: center;">16:9</td> <td data-bbox="884 548 1398 784">Scales an image so that it is displayed in the center of the screen with a 16:9 aspect ratio. This is most suitable for images which are already in a 16:9 aspect, like high definition TV.</td> </tr> <tr> <td data-bbox="609 784 884 1019" style="text-align: center;">Native</td> <td data-bbox="884 784 1398 1019">Projects the image as its original resolution and resizes it to fit within the display area. For input signals with lower resolutions, the projected image will be displayed in its original size.</td> </tr> <tr> <td data-bbox="609 1019 884 1294" style="text-align: center;">Auto</td> <td data-bbox="884 1019 1398 1294">Scales an image proportionally to fit the projector's native resolution in its horizontal width. This is suitable for the incoming image which is neither 4:3 nor 16:9 and you want to make the most use of the screen without altering the image's aspect ratio.</td> </tr> </tbody> </table> | Aspect Ratio | Description | 4:3 | Scales an image so that it is displayed in the center of the screen with a 4:3 aspect ratio. This is most suitable for 4:3 images like computer monitors, standard definition TV, and 4:3 aspect DVD movies, as it displays them without aspect alteration. | 16:9 | Scales an image so that it is displayed in the center of the screen with a 16:9 aspect ratio. This is most suitable for images which are already in a 16:9 aspect, like high definition TV. | Native | Projects the image as its original resolution and resizes it to fit within the display area. For input signals with lower resolutions, the projected image will be displayed in its original size. | Auto | Scales an image proportionally to fit the projector's native resolution in its horizontal width. This is suitable for the incoming image which is neither 4:3 nor 16:9 and you want to make the most use of the screen without altering the image's aspect ratio. |
| | Aspect Ratio | Description | | | | | | | | | |
| | 4:3 | Scales an image so that it is displayed in the center of the screen with a 4:3 aspect ratio. This is most suitable for 4:3 images like computer monitors, standard definition TV, and 4:3 aspect DVD movies, as it displays them without aspect alteration. | | | | | | | | | |
| | 16:9 | Scales an image so that it is displayed in the center of the screen with a 16:9 aspect ratio. This is most suitable for images which are already in a 16:9 aspect, like high definition TV. | | | | | | | | | |
| | Native | Projects the image as its original resolution and resizes it to fit within the display area. For input signals with lower resolutions, the projected image will be displayed in its original size. | | | | | | | | | |
| Auto | Scales an image proportionally to fit the projector's native resolution in its horizontal width. This is suitable for the incoming image which is neither 4:3 nor 16:9 and you want to make the most use of the screen without altering the image's aspect ratio. | | | | | | | | | | |
| Zoom | Reduce or magnify the projected image. | | | | | | | | | | |

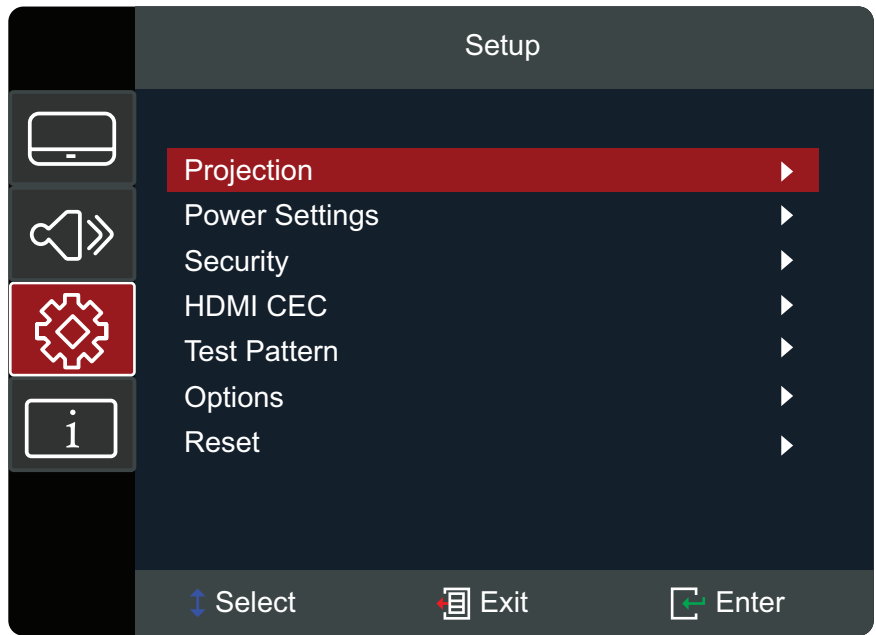
| Menu | Description | |
|-----------------|--|--|
| Keystone | Option | Description |
| | H. Keystone | Adjust image distortion horizontally. |
| | V. Keystone | Adjust image distortion vertically. |
| | Four Corners | Adjust each corner to make a square image when the projection surface is not level. NOTE: While adjusting the Four Corners, the Aspect Ratio, and Zoom menus will be disabled. To enable them, reset the Keystone settings to default. |
| | Warping | Configure the geometric distortion of the projector's images when the images are projected onto screens which have an uneven surface such as a cylinder, a spherical shape, etc. |
| Reset | Return the Keystone settings to default. | |

Audio Menu



| Menu | Description | | | | | | |
|-----------|---|--|-------------|-----|--|----|---------------------|
| Volume | Adjust the volume level. | | | | | | |
| Mute | Temporarily turn off the sound. | | | | | | |
| HDMI eARC | <table border="1"> <thead> <tr> <th>Option</th> <th>Description</th> </tr> </thead> <tbody> <tr> <td>Off</td> <td>Play sound via the projector's speakers or Audio Out port.</td> </tr> <tr> <td>On</td> <td>Switch to ARC/eARC.</td> </tr> </tbody> </table> | Option | Description | Off | Play sound via the projector's speakers or Audio Out port. | On | Switch to ARC/eARC. |
| | Option | Description | | | | | |
| | Off | Play sound via the projector's speakers or Audio Out port. | | | | | |
| On | Switch to ARC/eARC. | | | | | | |

Setup Menu



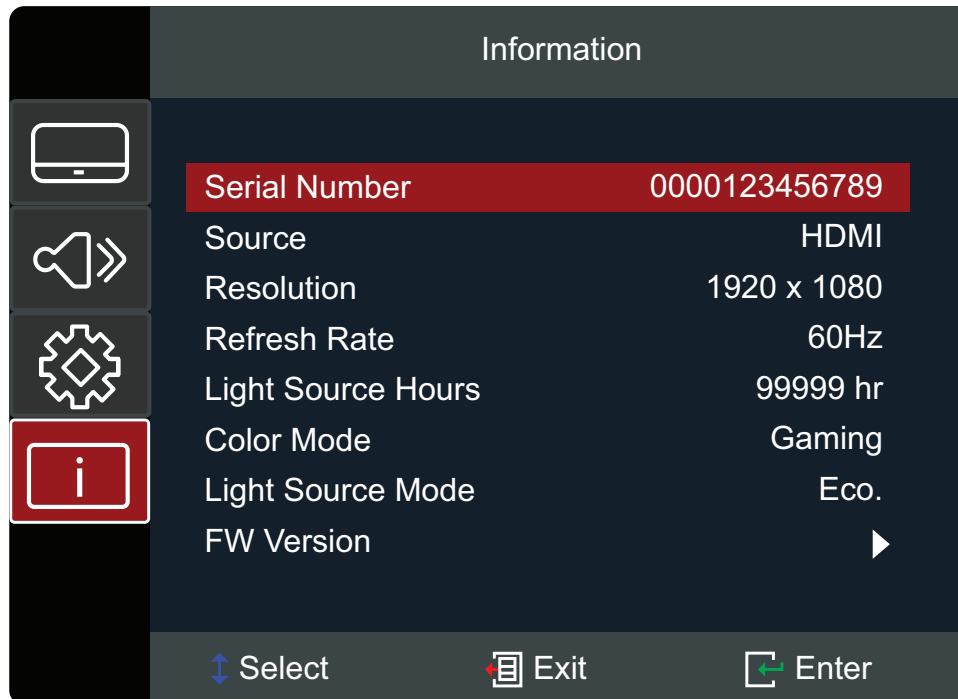
| Menu | Description |
|------------------------------|---|
| <p>Projection</p> | <p>Select the preferred projection location: Desk Front, Desk Rear, Ceiling Front, or Ceiling Rear.</p> |
| <p>Power Settings</p> | <p><u>Direct Power On</u> Automatically power on the projector when DC power is supplied, without pressing the Power button on the projector or the remote control.</p> <p><u>Signal Power On</u> Automatically power on the projector when a signal is detected, without pressing the Power button on the projector or on the remote control.</p> <p><u>Auto Power Off</u> A countdown timer will start when there is no signal being sent to the projector. The projector will automatically power off when the countdown has finished (in minutes).</p> <p>NOTE:</p> <ul style="list-style-type: none"> • When you deactivate the power management function, energy consumption will increase. • A warning message will also appear: <div style="border: 1px solid black; padding: 5px; margin-top: 10px;"> <p>COMMISSION REGULATION (EU) 2023/826 Disabling this function will increase energy consumption.</p> </div> |

| Menu | Description |
|--|--|
| <p style="text-align: center;">Security</p> | <p><u>Power On Lock</u> Enable or disable a password prompt before using the projector. NOTE: The default password is: 1234</p> <p><u>Change Password</u> Set or modify the password. NOTE: Please follow the OSD message to input the current password first, then enter a new password (security code). Confirm the new password by entering the new password again.</p> |
| <p style="text-align: center;">HDMI CEC</p> | <p><u>HDMI Link</u> When you connect HDMI CEC-compatible devices to the projector with HDMI cables, you can control them on the same power on or power off status using the HDMI CEC control feature in the projector's OSD. This lets one device or multiple devices in a group power on or power off via HDMI CEC in a typical configuration. NOTE:</p> <ul style="list-style-type: none"> • In order for the CEC function to work properly, make sure that the device is correctly connected to the HDMI input of the projector via an HDMI cable, and its CEC function is turned on. • If both HDMI 1 and HDMI 2 ports are occupied, the CEC function will not be able to detect the correct source. • Depending on the connected device, the CEC function may not work. <p><u>XBOX Mode</u> Enable/disable XBOX CEC function. NOTE: This option will show up when enabling HDMI Link. Please connect XBOX via the HDMI 1 port.</p> |
| <p style="text-align: center;">Test Pattern</p> | <p>Select the test pattern from green grid, magenta grid, white grid, white, test card or disable this function (off). NOTE: To exit Test Pattern, set Test Pattern to off or press the Auto Sync key.</p> |

| Menu | Description | | | | | | |
|----------------|---|--------|-------------|------------|---|-----------|--|
| Options | <p><u>Language</u> Select the On-Screen Display (OSD) Menu language.</p> <p><u>High Altitude</u> When On, the fans will spin faster for better cooling and performance. This is useful for high altitude environments where the air is thin.</p> <p><u>Auto Source</u> Automatically find an available input source.</p> <table border="1" data-bbox="611 544 1398 956"> <thead> <tr> <th data-bbox="611 544 884 591">Option</th> <th data-bbox="884 544 1398 591">Description</th> </tr> </thead> <tbody> <tr> <td data-bbox="611 591 884 712" style="text-align: center;">Off</td> <td data-bbox="884 591 1398 712">Only search the current input selection. Press the Source button to display the list of sources.</td> </tr> <tr> <td data-bbox="611 712 884 956" style="text-align: center;">On</td> <td data-bbox="884 712 1398 956">Automatically finds an available input source. Press the Source button to automatically detect the next source. NOTE: The scan order is: HDMI 1 > HDMI 2.</td> </tr> </tbody> </table> <p><u>Keypad Lock</u> Lock all keypad buttons, except for the Power key. NOTE: To release keypad lock, press and hold the Enter key on the projector for five seconds. You can also use the remote control and go to: Setup > Options > Keypad Lock > Off.</p> <p><u>Splash Screen</u> Set the “startup screen”. If changes are made, they will take effect the next time the projector is powered on. NOTE: Neutral is a black screen.</p> | Option | Description | Off | Only search the current input selection. Press the Source button to display the list of sources. | On | Automatically finds an available input source. Press the Source button to automatically detect the next source. NOTE: The scan order is: HDMI 1 > HDMI 2. |
| Option | Description | | | | | | |
| Off | Only search the current input selection. Press the Source button to display the list of sources. | | | | | | |
| On | Automatically finds an available input source. Press the Source button to automatically detect the next source. NOTE: The scan order is: HDMI 1 > HDMI 2. | | | | | | |
| Reset | <p>Return the settings to default. NOTE: When resetting, the following settings will still remain: Language, Projection, High Altitude, Security Settings, Zoom, Keystone Settings, and Light Source Hours.</p> | | | | | | |

Information Menu

View Serial Number, Source, Resolution, Refresh Rate, Light Source Hours, Color Mode, Light Source Mode, and Firmware Version information.



Appendix

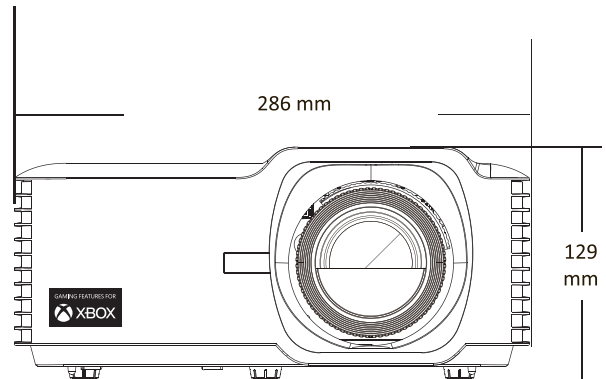
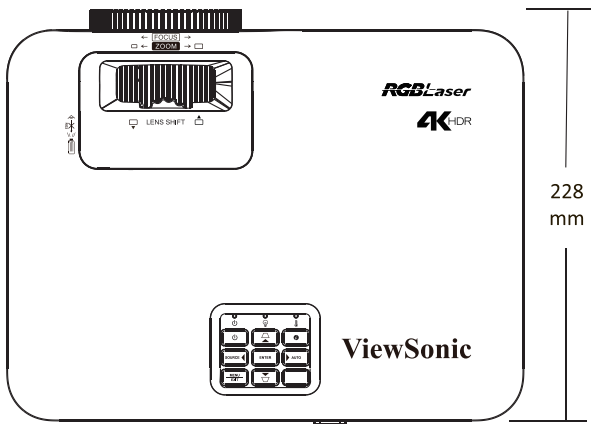
Specifications

| Item | Category | Specifications | |
|----------------------|----------------------|--|------------------------------------|
| Projector | Type | RGB Laser | |
| | Display Size | 30"~300" | |
| | Throw Ratio | 1.4~2.24 (100" @ 3.10 m) | |
| | Lens | F=2.5~3.26, f=20.911~32.62 mm | |
| | Display System | 1-CHIP DMD | |
| Input Signal | HDMI (v. 2.0) | f _h : 15~255 kHz, f _v : 23~240 Hz, Pixel rate: 600 MHz | |
| Resolution | Native | 3840 x 2160 | |
| Power | Input Voltage | DC 100~240V, 50/60 Hz (auto switch) | |
| Operating Conditions | Altitude | 0 to 760 m at 0°C to 40°C | 0 to 2,500 ft at 32°F to 104°F |
| | | 760 to 1,520 m at 0°C to 35°C | 2,500 to 5,000 ft at 32°F to 95°F |
| | | 1,520 to 3,048 m at 0°C to 30°C | 5,000 to 10,000 ft at 32°F to 86°F |
| | Relative Humidity | 10% to 80% (non-condensing) | |
| | Temperature | 0°C to 40°C | |
| 32°F to 104°F | | | |
| Storage Conditions | Altitude | 0 to 12,100 m | |
| | | 0 to 39,698.16 ft | |
| | Relative Humidity | 5% to 90% (non-condensing) | |
| | Temperature | -20°C to 60°C | |
| | | -4°F to 140°F | |
| Dimensions | Physical (W x H x D) | 286 x 129 x 228 mm | |
| | | 11.26" x 5.08" x 8.98" | |
| Weight | Physical | 2.70 kg | |
| | | 5.95 lbs | |
| Power Consumption | On ¹ | 145W (Typical) | |
| | Off | < 0.5W (Standby) | |

1 - The test condition follows EEI standards.

Projector Dimensions

286 mm (W) x 129 mm (H) x 228 mm (D)



Timing Chart

HDMI Video Timing

| Timing | Resolution | Refresh Rate (Hz) |
|-------------|-------------|------------------------------|
| SDTV(480i) | 720 x 480 | 60 |
| SDTV(480p) | 720 x 480 | 60 |
| SDTV(576i) | 720 x 576 | 50 |
| SDTV(576p) | 720 x 576 | 50 |
| HDTV(720p) | 1280 x 720 | 50/60 |
| HDTV(1080i) | 1920 x 1080 | 50/60 |
| HDTV(1080p) | 1920 x 1080 | 24 / 25 / 30 / 50 / 60 / 120 |
| 4K | 3840 x 2160 | 24 / 25 / 30 / 50 / 60 |

HDMI PC Timing

| Timing | Resolution | Refresh Rate (Hz) |
|--------------|-------------|-------------------|
| VGA | 640 x 480 | 60 / 67 / 72 / 75 |
| | 720 x 400 | 70 |
| SVGA | 800 x 600 | 56 / 60 / 72 / 75 |
| | 832 x 624 | 75 |
| XGA | 1024 x 768 | 60 / 70 / 75 |
| SXGA | 1280 x 1024 | 60 / 75 |
| PowerBook G4 | 1152 x 870 | 75 |

HDMI Extended Wide Timing

| Timing | Resolution | Refresh Rate (Hz) |
|----------|----------------|-------------------|
| XGA | 1152 x 864 | 75 |
| Quad VGA | 1280 x 960 | 60 |
| WXGA | 1280 x 720 | 120 |
| | 1440 x 900 | 60 |
| WSXGA+ | 1680 x 1050 | 60 |
| | 1920 x 1080 | 60 / 240 |
| WUXGA | 1920 x 1200-RB | 60 |
| 2K | 2560 x 1440 | 120 |

3D Support Timing

| HDMI 3D | | |
|------------------------------|-------------------|--------------------------|
| Frame Packing Format | | |
| Timing | Resolution | Refresh Rate (Hz) |
| 720p | 1280 x 720 | 50 / 60 |
| 1080p | 1920 x 1080 | 24 |
| Side by Side Format | | |
| Timing | Resolution | Refresh Rate (Hz) |
| 1080i | 1920 x 1080 | 50 / 60 |
| Top and Bottom Format | | |
| Timing | Resolution | Refresh Rate (Hz) |
| 720p | 1280 x 720 | 50 / 60 |
| 1080p | 1920 x 1080 | 24 |

Troubleshooting

This section describes some common problems that you may experience when using the projector.

| Problem or Issue | Possible Solutions |
|---|---|
| The projector does not turn on | <ul style="list-style-type: none">• Ensure the power cord is properly attached to the projector and to the power outlet.• If the cooling process has not completed, please wait until it has finished then try to turn on the projector again.• If the above does not work, try another power outlet or another electrical device with the same power outlet. |
| There is no picture | <ul style="list-style-type: none">• Ensure the video source cable is connected properly, and that the video source is turned on.• If the input source is not selected automatically, select the correct source with the “Source Input” on either the projector or the remote control. |
| The image is blurred | <ul style="list-style-type: none">• Adjusting focus with the Focus Ring will help correctly focus the projection lens.• Ensure the projector and screen are aligned properly. If necessary, adjust the height of the projector as well as the projection angle and direction. |
| The image is reversed | <ul style="list-style-type: none">• Open the OSD Menu and go to: Setup > Projection and adjust the projection option. |
| The image is stretched when projecting a 16:9 DVD | <ul style="list-style-type: none">• When you play an anamorphic DVD or 16:9 DVD, the projector will show the best image in 16:9.• If you play a 4:3 format DVD title, please change the format as 4:3 in projector OSD Menu.• Please setup the display format as 16:9 (wide) aspect ratio on the DVD player. |

| Problem or Issue | Possible Solutions |
|--|---|
| The remote control does not work | <ul style="list-style-type: none">• Ensure there are no obstacles between the remote control and projector; and that they are within range, 8m (26 ft).• The batteries may be out of power, please check and replace if necessary. |
| The projector stops responding to all controls | <ul style="list-style-type: none">• Turn off the projector and unplug the power cord. Wait at least 20 seconds then reconnect and try again. |

LED Indicators

When the warning indicators (see below) light up or flash, the projector will automatically shutdown. Unplug the power cord from the projector, wait for 30 seconds and try again. If the warning indicators light up or flash, please contact your nearest service center for assistance.

| Status and Description | Power Indicator Light | | Temperature Indicator Light | Light Source Indicator Light |
|---|-----------------------|---|-----------------------------|------------------------------|
| | Red | Blue | Red | Red |
| Standby State (Power cord input) | Steady Light | | | |
| Power On (Warming) | | Flashing Light (0.5 sec. off/0.5 sec. light) | | |
| Power On and Lamp Lighting | | Steady Light | | |
| Power Off (Cooling) | | Flashing Light (0.5 sec. off/0.5 sec. light); back to steady red light when cooling fans turn off | | |
| Error (Lamp failure) | Flashing Light | | | |
| Error (Fan failure) | Flashing Light | | Flashing Light | |
| Error (Overheating) | Flashing Light | | Steady Light | |

Maintenance

General Precautions

- Make sure the projector is turned off and the power cable is unplugged from the power outlet.
- Never remove any parts from the projector. Contact ViewSonic® or a reseller when any part of the projector needs replacing.
- Never spray or pour any liquid directly onto the case.
- Handle the projector with care, as a darker-colored projector, if scuffed, may show marks more clearly than a lighter-colored projector.

Cleaning the Lens

- Use a canister of compressed air to remove dust.
- If the lens is still not clean, use lens-cleaning paper or moisten a soft cloth with lens cleaner and gently wipe the surface.

CAUTION: Never rub the lens with abrasive materials.

Cleaning the Case

- Use a soft, lint-free, dry cloth to remove dirt or dust.
- If the case is still not clean, apply a small amount of non-ammonia, non-alcohol based, mild non-abrasive detergent onto a clean, soft, lint-free cloth, then wipe the surface.

CAUTION: Never use wax, alcohol, benzene, thinner, or other chemical detergents.

Storing the Projector

If you intend to store the projector for an extended period of time:

- Ensure the temperature and humidity of the storage area are within the recommend range.
- Retract the adjuster foot completely.
- Remove the batteries from the remote control.
- Pack the projector in its original packaging or equivalent.

Disclaimer

- ViewSonic® does not recommend the use of any ammonia or alcohol-based cleaners on the lens or case. Some chemical cleaners have been reported to damage the lens and/or case of the projector.
- ViewSonic® will not be liable for damage resulting from use of any ammonia or alcohol-based cleaners.

Regulatory and Service Information

Compliance Information

This section addresses all connected requirements and statements regarding regulations. Confirmed corresponding applications shall refer to nameplate labels and relevant markings on the unit.

FCC Compliance Statement

This device complies with part 15 of FCC Rules. Operation is subject to the following two conditions: (1) this device may not cause harmful interference, and (2) this device must accept any interference received, including interference that may cause undesired operation. This equipment has been tested and found to comply with the limits for a Class B digital device, pursuant to part 15 of the FCC Rules.

These limits are designed to provide reasonable protection against harmful interference in a residential installation. This equipment generates, uses, and can radiate radio frequency energy, and if not installed and used in accordance with the instructions, may cause harmful interference to radio communications. However, there is no guarantee that interference will not occur in a particular installation. If this equipment does cause harmful interference to radio or television reception, which can be determined by turning the equipment off and on, the user is encouraged to try to correct the interference by one or more of the following measures:

- Reorient or relocate the receiving antenna.
- Increase the separation between the equipment and receiver.
- Connect the equipment into an outlet on a circuit different from that to which the receiver is connected.
- Consult the dealer or an experienced radio/TV technician for help.

Warning: You are cautioned that changes or modifications not expressly approved by the party responsible for compliance could void your authority to operate the equipment.

Industry Canada Statement

This Class B digital apparatus complies with Canadian ICES-003.

Cet appareil numérique de classe B est conforme à la norme NMB-003 du Canada.

CAN ICES (B) / NMB (B)

CE Conformity for European Countries

CE The device complies with the EMC Directive 2014/30/EU and Low Voltage Directive 2014/35/EU. Ecodesign Directive 2009/125/EC.

The following information is only for EU-member states:

The mark shown to the right is in compliance with the Waste Electrical and Electronic Equipment Directive 2012/19/EU (WEEE). The mark indicates the requirement NOT to dispose of the equipment as unsorted municipal waste, but use the return and collection systems according to local law.



Declaration of RoHS2 Compliance

This product has been designed and manufactured in compliance with Directive 2011/65/EU of the European Parliament and the Council on restriction of the use of certain hazardous substances in electrical and electronic equipment (RoHS2 Directive) and is deemed to comply with the maximum concentration values issued by the European Technical Adaptation Committee (TAC) as shown below:

| Substance | Proposed Maximum Concentration | Actual Concentration |
|---|--------------------------------|----------------------|
| Lead (Pb) | 0.1% | < 0.1% |
| Mercury (Hg) | 0.1% | < 0.1% |
| Cadmium (Cd) | 0.01% | < 0.01% |
| Hexavalent Chromium (Cr6 ⁺) | 0.1% | < 0.1% |
| Polybrominated biphenyls (PBB) | 0.1% | < 0.1% |
| Polybrominated diphenyl ethers (PBDE) | 0.1% | < 0.1% |
| Bis (2-ethylhexyl) phthalate (DEHP) | 0.1% | < 0.1% |
| Butyl benzyl phthalate (BBP) | 0.1% | < 0.1% |
| Dibutyl phthalate (DBP) | 0.1% | < 0.1% |
| Diisobutyl phthalate (DIBP) | 0.1% | < 0.1% |

Certain components of products as stated above are exempted under the Annex III of the RoHS2 Directives as noted below. Examples of exempted components are:

- Copper alloy containing up to 4% lead by weight.
- Lead in high melting temperature type solders (i.e. lead-based alloys containing 85% by weight or more lead).
- Electrical and electronic components containing lead in a glass or ceramic other than dielectric ceramic in capacitors, e.g. piezoelectronic devices, or in a glass or ceramic matrix compound.
- Lead in dielectric ceramic in capacitors for a rated voltage of 125 V AC or 250 V DC or higher.

Indian Restriction of Hazardous Substances

Restriction on Hazardous Substances statement (India). This product complies with the “India E-waste Rule 2011” and prohibits use of lead, mercury, hexavalent chromium, polybrominated biphenyls or polybrominated diphenyl ethers in concentrations exceeding 0.1 weight % and 0.01 weight % for cadmium, except for the exemptions set in Schedule 2 of the Rule.

Product Disposal at End of Product Life

ViewSonic® respects the environment and is committed to working and living green. Thank you for being part of Smarter, Greener Computing. Please visit the ViewSonic® website to learn more.

USA & Canada:

<https://www.viewsonic.com/us/go-green-with-viewsonic>

Europe:

<https://www.viewsonic.com/eu/environmental-social-governance/recycle>

Taiwan:

<https://recycle.moenv.gov.tw/>

For EU users, please contact us for any safety/accident issue experienced with this product:

ViewSonic Europe Limited



Haaksbergweg 75
1101 BR Amsterdam
Netherlands



+31 (0) 650608655



EPREL@viewsoniceurope.com



<https://www.viewsonic.com/eu/>

Copyright Information

Copyright© ViewSonic® Corporation, 2024. All rights reserved.

Macintosh and Power Macintosh are registered trademarks of Apple Inc.

Microsoft, Windows, and the Windows logo are registered trademarks of Microsoft Corporation in the United States and other countries.

ViewSonic® and the three birds logo are registered trademarks of ViewSonic® Corporation.

VESA is a registered trademark of the Video Electronics Standards Association. DPMS, DisplayPort, and DDC are trademarks of VESA.

ENERGY STAR® is a registered trademark of the U.S. Environmental Protection Agency (EPA).

As an ENERGY STAR® partner, ViewSonic® Corporation has determined that this product meets the ENERGY STAR® guidelines for energy efficiency.

Disclaimer: ViewSonic® Corporation shall not be liable for technical or editorial errors or omissions contained herein; nor for incidental or consequential damages resulting from furnishing this material, or the performance or use of this product.

In the interest of continuing product improvement, ViewSonic® Corporation reserves the right to change product specifications without notice. Information in this document may change without notice.

No part of this document may be copied, reproduced, or transmitted by any means, for any purpose without prior written permission from ViewSonic® Corporation.

Customer Service

For technical support or product service, see the table below or contact your reseller.

NOTE: You will need the product's serial number.

| Country/ Region | Website | Country/ Region | Website |
|----------------------------------|--|--------------------------|--|
| Asia Pacific & Africa | | | |
| Australia | www.viewsonic.com/au/ | Bangladesh | www.viewsonic.com/bd/ |
| 中国 (China) | www.viewsonic.com.cn | 香港 (繁體中文) | www.viewsonic.com/hk/ |
| Hong Kong (English) | www.viewsonic.com/hk-en/ | India | www.viewsonic.com/in/ |
| Indonesia | www.viewsonic.com/id/ | Israel | www.viewsonic.com/il/ |
| 日本 (Japan) | www.viewsonic.com/jp/ | Korea | www.viewsonic.com/kr/ |
| Malaysia | www.viewsonic.com/my/ | Middle East | www.viewsonic.com/me/ |
| Myanmar | www.viewsonic.com/mm/ | Nepal | www.viewsonic.com/np/ |
| New Zealand | www.viewsonic.com/nz/ | Pakistan | www.viewsonic.com/pk/ |
| Philippines | www.viewsonic.com/ph/ | Singapore | www.viewsonic.com/sg/ |
| 臺灣 (Taiwan) | www.viewsonic.com/tw/ | ประเทศไทย | www.viewsonic.com/th/ |
| Việt Nam | www.viewsonic.com/vn/ | South Africa & Mauritius | www.viewsonic.com/za/ |
| Americas | | | |
| United States | www.viewsonic.com/us | Canada | www.viewsonic.com/us |
| Latin America | www.viewsonic.com/la | | |
| Europe | | | |
| Europe | www.viewsonic.com/eu/ | France | www.viewsonic.com/fr/ |
| Deutschland | www.viewsonic.com/de/ | Қазақстан | www.viewsonic.com/kz/ |
| Россия | www.viewsonic.com/ru/ | España | www.viewsonic.com/es/ |
| Türkiye | www.viewsonic.com/tr/ | Україна | www.viewsonic.com/ua/ |
| United Kingdom | www.viewsonic.com/uk/ | | |

Limited Warranty

ViewSonic® Projector

What the warranty covers:

ViewSonic® warrants its products to be free from defects in material and workmanship, under normal use, during the warranty period. If a product proves to be defective in material or workmanship during the warranty period, ViewSonic® will, at its sole option, repair or replace the product with a like product. Replacement product or parts may include remanufactured or refurbished parts or components.

Limited Three (3) year General Warranty:

Subject to the more limited one (1) year warranty set out below, North and South America: Three (3) years warranty for all parts excluding the lamp, three (3) years for labor, and one (1) year for the original lamp from the date of the first consumer purchase.

Other regions or countries: Please check with your local dealer or local ViewSonic® office for the warranty information.

Limited One (1) year Heavy Usage Warranty:

Under heavy usage settings, where a projector's use includes more than fourteen (14) hours average daily usage, North and South America: One (1) year warranty for all parts excluding the lamp, one (1) year for labor, and ninety (90) days for the original lamp from the date of the first consumer purchase; Europe: One (1) year warranty for all parts excluding the lamp, one (1) year for labor, and ninety (90) days for the original lamp from the date of the first consumer purchase. Other regions or countries: Please check with your local dealer or local ViewSonic® office for the warranty information. Lamp warranty subject to terms and conditions, verification and approval. Applies to manufacturer's installed lamp only. All accessory lamps purchased separately are warranted for 90 days.

Who the warranty protects:

This warranty is valid only for the first consumer purchaser.

What the warranty does not cover:

1. Any product on which the serial number has been defaced, modified, or removed.
2. Damage, deterioration, or malfunction resulting from:
 - » Accident, misuse, neglect, fire, water, lightning, or other acts of nature, unauthorized product modification, or failure to follow instructions supplied with the product.
 - » Operation outside of product specifications.
 - » Operation of the product for other than the normal intended use or not under normal conditions.
 - » Repair or attempted repair by anyone not authorized by ViewSonic®.
 - » Any damage of the product due to shipment.
 - » Removal or installation of the product.
 - » Causes external to the product, such as electric power fluctuations or failure.
 - » Use of supplies or parts not meeting Viewsonic's specifications.
 - » Normal wear and tear.
 - » Any other cause which does not relate to a product defect.
3. Removal, installation, and set-up service charges.

How to get service:

1. For information about receiving service under warranty, contact ViewSonic® Customer Support (Please refer to the "Customer Support" page). You will need to provide your product's serial number.
2. To obtain warranted service, you will be required to provide: (a) the original dated sales slip, (b) your name, (c) your address, (d) a description of the problem, and (e) the serial number of the product.
3. Take or ship the product, freight prepaid, in the original container to an authorized ViewSonic® service center or ViewSonic®.
4. For additional information or the name of the nearest ViewSonic® service center, contact ViewSonic®.

Limitation of implied warranties:

There are no warranties, express or implied, which extend beyond the description contained herein including the implied warranty of merchantability and fitness for a particular purpose.

Exclusion of damages:

ViewSonic's liability is limited to the cost of repair or replacement of the product. ViewSonic® shall not be liable for:

1. Damage to other property caused by any defects in the product, damages based upon inconvenience, loss of use of the product, loss of time, loss of profits, loss of business opportunity, loss of goodwill, interference with business relationships, or other commercial loss, even if advised of the possibility of such damages.
2. Any other damages, whether incidental, consequential or otherwise.
3. Any claim against the customer by any other party.

Effect of state law:

This warranty gives you specific legal rights, and you may also have other rights which vary from local authority. Some local governments do not allow limitations on implied warranties and/or do not allow the exclusion of incidental or consequential damages, so the above limitations and exclusions may not apply to you.

Sales outside the U.S.A. and Canada:

For warranty information and service on ViewSonic® products sold outside of the U.S.A. and Canada, contact ViewSonic® or your local ViewSonic® dealer.

The warranty period for this product in mainland China (Hong Kong, Macao, and Taiwan Excluded) is subject to the terms and conditions of the Maintenance Guarantee Card.

For users in Europe and Russia, full details of warranty provided can be found at: <http://www.viewsonic.com/eu/> under "Support/Warranty Information".

Mexico Limited Warranty

ViewSonic® Projector

What the warranty covers:

ViewSonic® warrants its products to be free from defects in material and workmanship, under normal use, during the warranty period. If a product proves to be defective in material or workmanship during the warranty period, ViewSonic® will, at its sole option, repair or replace the product with a like product. Replacement product or parts may include remanufactured or refurbished parts or components & accessories.

How long the warranty is effective:

3 years for all parts excluding the lamp, 3 years for labor, 1 year for the original lamp from the date of the first consumer purchase.

Lamp warranty subject to terms and conditions, verification and approval. Applies to manufacturer's installed lamp only.

All accessory lamps purchased separately are warranted for 90 days.

Who the warranty protects:

This warranty is valid only for the first consumer purchaser.

What the warranty excludes and does not cover:

1. Any product on which the serial number has been defaced, modified or removed.
2. Damage, deterioration, or malfunction resulting from:
 - » Accident, misuse, neglect, fire, water, lightning, or other acts of nature, unauthorized product modification, unauthorized attempted repair, or failure to follow instructions supplied with the product.
 - » Any damage of the product due to shipment.
 - » Causes external to the product, such as electrical power fluctuations or failure.
 - » Use of supplies or parts not meeting ViewSonic®'s specifications.
 - » Normal wear and tear.
 - » Any other cause which does not relate to a product defect.
3. Any product exhibiting a condition commonly known as "image burn-in" which results when a static image is displayed on the product for an extended period of time.
4. Removal, installation, insurance, and set-up service charges.

How to get service:

For information about receiving service under warranty, contact ViewSonic® Customer Support (Please refer to the attached “Customer Service” page). You will need to provide your product’s serial number, so please record the product information in the space provided below on your purchase for your future use. Please retain your receipt of proof of purchase to support your warranty claim.

For Your Records

Product Name: _____ Model Number: _____

Document Number: _____ Serial Number: _____

Purchase Date: _____ Extended Warranty Purchase? _____ (Y/N)

If so, what date does warranty expire? _____

1. To obtain warranty service, you will be required to provide (a) the original dated sales slip, (b) your name, (c) your address, (d) a description of the problem, and (e) the serial number of the product.
2. Take or ship the product, in the original container packaging, to an authorized ViewSonic® service center.
3. Round trip transportation costs for in-warranty products will be paid by ViewSonic®.

Limitation of implied warranties:

There are no warranties, express or implied, which extend beyond the description contained herein including the implied warranty of merchantability and fitness for a particular purpose.

Exclusion of damages:

ViewSonic®’s liability is limited to the cost of repair or replacement of the product. ViewSonic® shall not be liable for:

1. Damage to other property caused by any defects in the product, damages based upon inconvenience, loss of use of the product, loss of time, loss of profits, loss of business opportunity, loss of goodwill, interference with business relationships, or other commercial loss, even if advised of the possibility of such damages.
2. Any other damages, whether incidental, consequential or otherwise.
3. Any claim against the customer by any other party.
4. Repair or attempted repair by anyone not authorized by ViewSonic®.

| | |
|---|---|
| Contact Information for Sales & Authorized Service (Centro Autorizado de Servicio) within Mexico: | |
| Name, address, of manufacturer and importers: México, Av. de la Palma #8 Piso 2 Despacho 203, Corporativo Interpalmas, Col. San Fernando Huixquilucan, Estado de México Tel: (55) 3605-1099 http://www.viewsonic.com/la/soporte/index.htm | |
| NÚMERO GRATIS DE ASISTENCIA TÉCNICA PARA TODO MÉXICO: 001.866.823.2004 | |
| Hermosillo: Distribuciones y Servicios Computacionales SA de CV. Calle Juárez 284 local 2 Col. Bugambilias C.P: 83140 Tel: 01-66-22-14-9005 E-Mail: disc2@hmo.megared.net.mx | Villahermosa: Compumantenimientos Garantizados, S.A. de C.V. AV. GREGORIO MENDEZ #1504 COL, FLORIDA C.P. 86040 Tel: 01 (993) 3 52 00 47 / 3522074 / 3 52 20 09 E-Mail: compumantenimientos@prodigy.net.mx |
| Puebla, Pue. (Matriz): RENTA Y DATOS, S.A. DE C.V. Domicilio: 29 SUR 721 COL. LA PAZ 72160 PUEBLA, PUE. Tel: 01(52).222.891.55.77 CON 10 LINEAS E-Mail: datos@puebla.megared.net.mx | Veracruz, Ver.: CONEXION Y DESARROLLO, S.A DE C.V. Av. Americas # 419 ENTRE PINZÓN Y ALVARADO Fracc. Reforma C.P. 91919 Tel: 01-22-91-00-31-67 E-Mail: gacosta@qplus.com.mx |
| Chihuahua: Soluciones Globales en Computación C. Magisterio # 3321 Col. Magisterial Chihuahua, Chih. Tel: 4136954 E-Mail: Cefeo@soluglobales.com | Cuernavaca: Compusupport de Cuernavaca SA de CV Francisco Leyva # 178 Col. Miguel Hidalgo C.P. 62040, Cuernavaca Morelos Tel: 01 777 3180579 / 01 777 3124014 E-Mail: aquevedo@compusupportcva.com |
| Distrito Federal: QPLUS, S.A. de C.V. Av. Coyoacán 931 Col. Del Valle 03100, México, D.F. Tel: 01(52)55-50-00-27-35 E-Mail : gacosta@qplus.com.mx | Guadalajara, Jal.: SERVICRECE, S.A. de C.V. Av. Niños Héroes # 2281 Col. Arcos Sur, Sector Juárez 44170, Guadalajara, Jalisco Tel: 01(52)33-36-15-15-43 E-Mail: mmiranda@servicrece.com |
| Guerrero Acapulco: GS Computación (Grupo Sesicomp) Progreso #6-A, Colo Centro 39300 Acapulco, Guerrero Tel: 744-48-32627 | Monterrey: Global Product Services Mar Caribe # 1987, Esquina con Golfo Pérsico Fracc. Bernardo Reyes, CP 64280 Monterrey N.L. México Tel: 8129-5103 E-Mail: aydeem@gps1.com.mx |
| MERIDA: ELECTROSER Av Reforma No. 403Gx39 y 41 Mérida, Yucatán, México CP97000 Tel: (52) 999-925-1916 E-Mail: rrrb@sureste.com | Oaxaca, Oax.: CENTRO DE DISTRIBUCION Y SERVICIO, S.A. de C.V. Murguía # 708 P.A., Col. Centro, 68000, Oaxaca Tel: 01(52)95-15-15-22-22 Fax: 01(52)95-15-13-67-00 E-Mail: gpotai2001@hotmail.com |
| Tijuana: STD Av Ferrocarril Sonora #3780 L-C Col 20 de Noviembre Tijuana, Mexico | FOR USA SUPPORT: ViewSonic® Corporation 381 Brea Canyon Road, Walnut, CA. 91789 USA Tel: 800-688-6688 E-Mail: http://www.viewsonic.com |

