



ViewSonic®

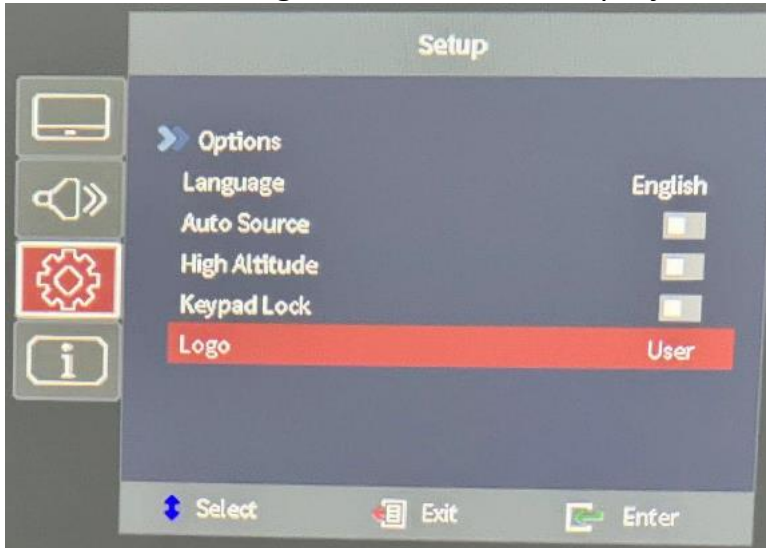


Splash downloader operating guide



1. Set "Logo" to "User"

Please set the "Logo" item to "User" in projector setup menu.



2. Download mode

Enter download mode by different projector model.

For example, LS740/711 series, hold "power" button then plug in power.





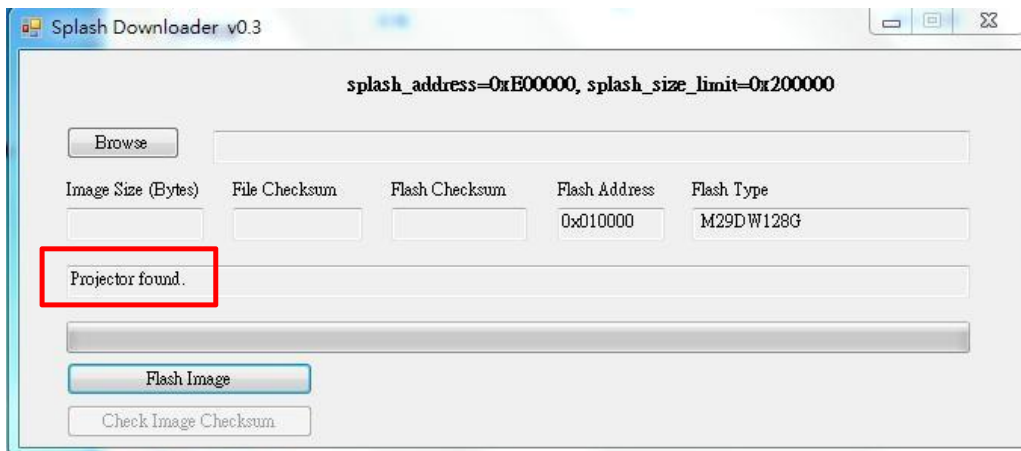
3. Connect USB cable between PC and projector

Please find the “SERVICE” USB port and plug-in USB cable.



4. Click Splash Downloader

Click Splash Downloader. If the message says "Projector found", the projector has been connected successfully.



Note: If “Error: No Projector found.”, the projector is not connected. Please retry step 2 and step 3.



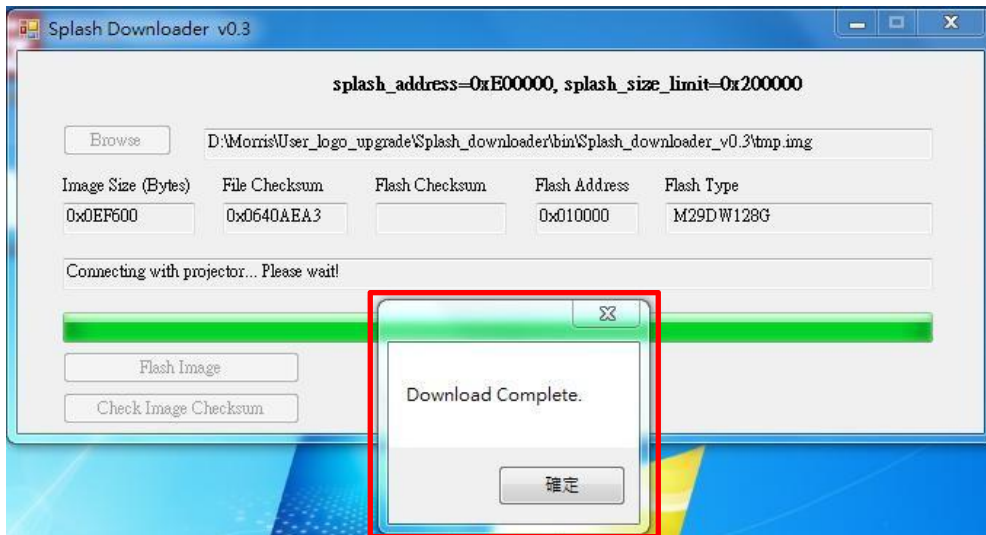
5. Select logo file

Click the "Browse" button and select logo file. The recommended resolution of logo should not exceed the default logo resolution (For example LS740HD, logo resolution is 1920x1080). The purpose is that keeping the quality of the image. If not, the logo may be blurred.

Note: Only support "PNG" file format.

6. Download logo to projector

Click the "Flash Image" button. If the file was written to projector successfully, the message "Download Complete" will be displayed on the screen.



7. Reboot projector

Plug-out the power core of projector and plug-in it. Please ensure that the logo has been upgraded correctly.