

ViewSonic[®]



**Slot in PC module
VPC16-WP_VPC17-WP
(for IFP50 series)
Quick Start Guide**

Model No. VS17668

Compliance Information

NOTE: This section addresses all connected requirements and statements regarding regulations. Confirmed corresponding applications shall refer to nameplate labels and relevant markings on unit.

FCC Compliance Statement

This device complies with part 15 of FCC Rules. Operation is subject to the following two conditions: (1) this device may not cause harmful interference, and (2) this device must accept any interference received, including interference that may cause undesired operation.

This equipment has been tested and found to comply with the limits for a Class B digital device, pursuant to part 15 of the FCC Rules. These limits are designed to provide reasonable protection against harmful interference in a residential installation. This equipment generates, uses, and can radiate radio frequency energy, and if not installed and used in accordance with the instructions, may cause harmful interference to radio communications. However, there is no guarantee that interference will not occur in a particular installation. If this equipment does cause harmful interference to radio or television reception, which can be determined by turning the equipment off and on, the user is encouraged to try to correct the interference by one or more of the following measures:

- Reorient or relocate the receiving antenna.
- Increase the separation between the equipment and receiver.
- Connect the equipment into an outlet on a circuit different from that to which the receiver is connected.
- Consult the dealer or an experienced radio/TV technician for help.

Warning: You are cautioned that changes or modifications not expressly approved by the party responsible for compliance could void your authority to operate the equipment.

Industry Canada Statement

CAN ICES-3 (B)/NMB-3(B)

Contains FCC ID: PD99260NG

IC ID: 1000M-9260NG

CE Conformity for European Countries



The device complies with the EMC Directive 2014/30/EU and Low Voltage Directive 2014/35/EU and Radio Equipment Directive (RED) 2014/53/EU.

Following information is only for EU-member states:

The mark shown to the right is in compliance with the Waste Electrical and Electronic Equipment Directive 2012/19/EU (WEEE). The mark indicates the requirement NOT to dispose the equipment as unsorted municipal waste, but use the return and collection systems according to local law.



In all EU member states, operation of 5150-5350MHz is restricted to indoor use only. This device should be installed and operated with a minimum distance of 20cm between the radiator and your body.

Indian Restriction of Hazardous Substances

Restriction on Hazardous Substances statement (India) This product complies with the “India E-waste Rule 2011” and prohibits use of lead, mercury, hexavalent chromium, polybrominated biphenyls or polybrominated diphenyl ethers in concentrations exceeding 0.1 weight % and 0.01 weight % for cadmium, except for the exemptions set in Schedule 2 of the Rule.

Declaration of RoHS2 Compliance

This product has been designed and manufactured in compliance with Directive 2011/65/EU of the European Parliament and the Council on restriction of the use of certain hazardous substances in electrical and electronic equipment (RoHS2 Directive) and is deemed to comply with the maximum concentration values issued by the European Technical Adaptation Committee (TAC) as shown below:

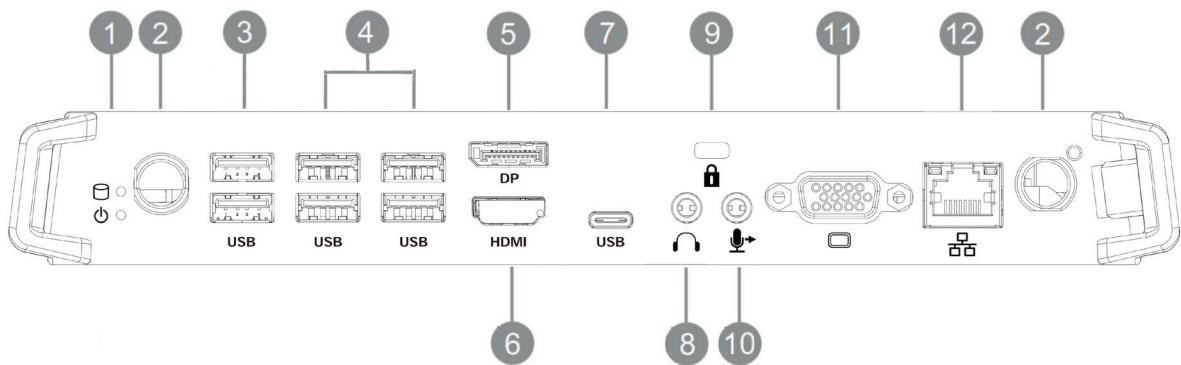
Substance	Proposed Maximum Concentration	Actual Concentration
Lead (Pb)	0.1%	< 0.1%
Mercury (Hg)	0.1%	< 0.1%
Cadmium (Cd)	0.01%	< 0.01%
Hexavalent Chromium (Cr ⁶⁺)	0.1%	< 0.1%
Polybrominated biphenyls (PBB)	0.1%	< 0.1%
Polybrominated diphenyl ethers (PBDE)	0.1%	< 0.1%

**Certain components of products as stated above are exempted under the Annex III of the RoHS2 Directives as noted below:

Examples of exempted components are:

1. Lead in glass of cathode ray tubes
2. Lead in glass of fluorescent tubes not exceeding 0.2% by weight
3. Lead as an alloying element in aluminium containing up to 0.4% lead by weight
4. Copper alloy containing up to 4% lead by weight
5. Lead in high melting temperature type solders (i.e. lead-based alloys containing 85% by weight or more lead)
6. Electrical and electronic components containing lead in a glass or ceramic other than dielectric ceramic in capacitors, e.g. piezoelectronic devices, or in a glass or ceramic matrix compound.
7. Lead as an alloying element in steel for machining purposes and in galvanized steel containing up to 0.35% lead by weight.
8. Lead in dielectric ceramic in capacitors for a rated voltage of 125V AC or 250V DC or higher.
9. Cadmium and its compounds in electrical contacts.

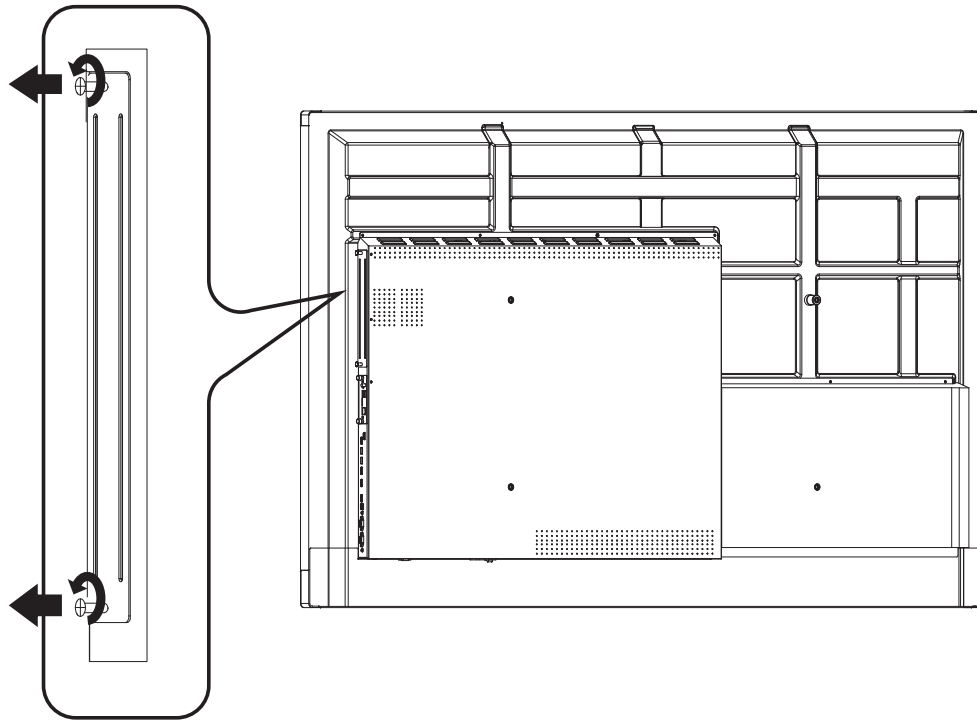
1. Interface



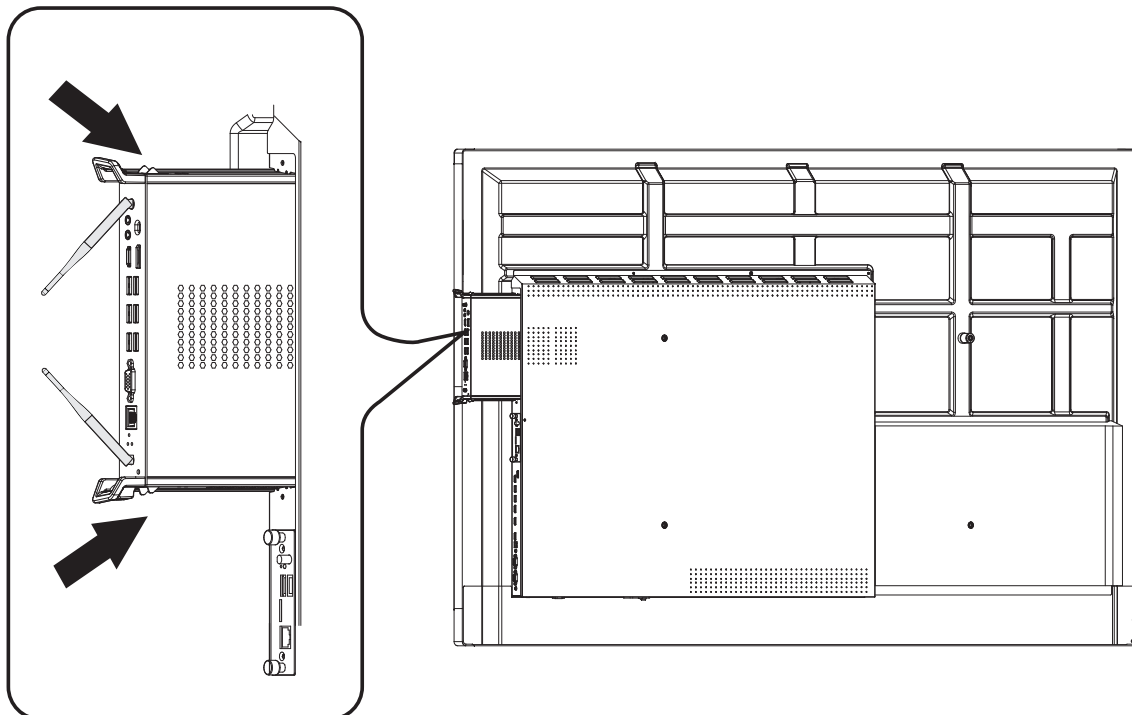
Item	Description
1	Working indicator light
2	WIFI antenna interface
3	USB 2.0 interface
4	USB 3.0 interface
5	Connect the display to a DisplayPort connector
6	Connected to device with HDMI input function
7	USB type C interface
8	Connects the device to headphones or speakers
9	Anti-theft lock
10	Connects to a microphone
11	Connects the display to a VGA-IN connector
12	Standard RJ45 (10M/100M/1G) Internet connection interface (This network port is only used for PC)

2. Installation

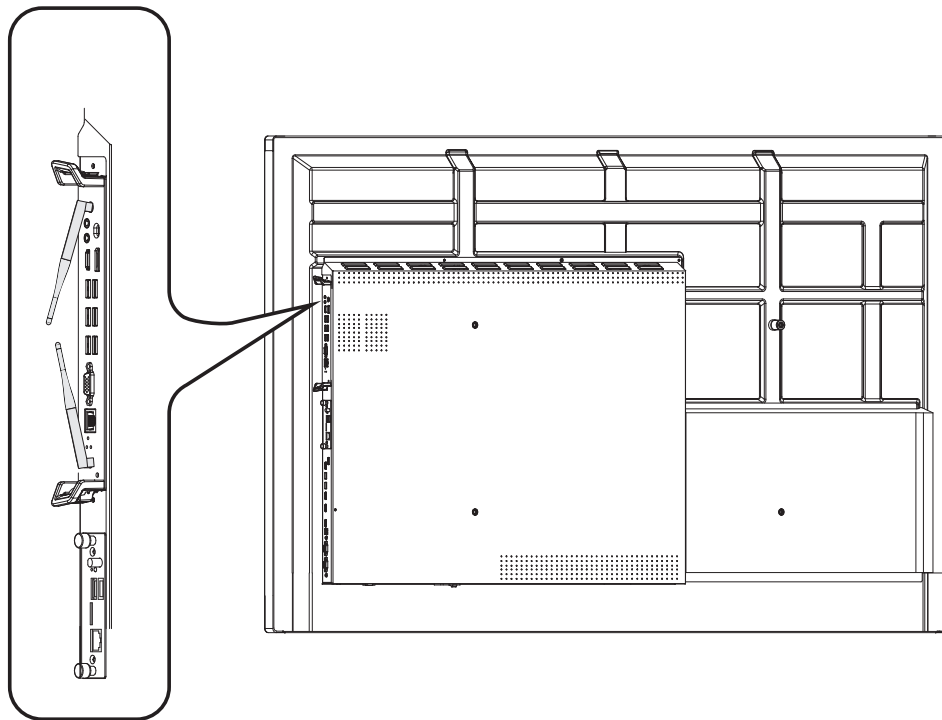
2-1



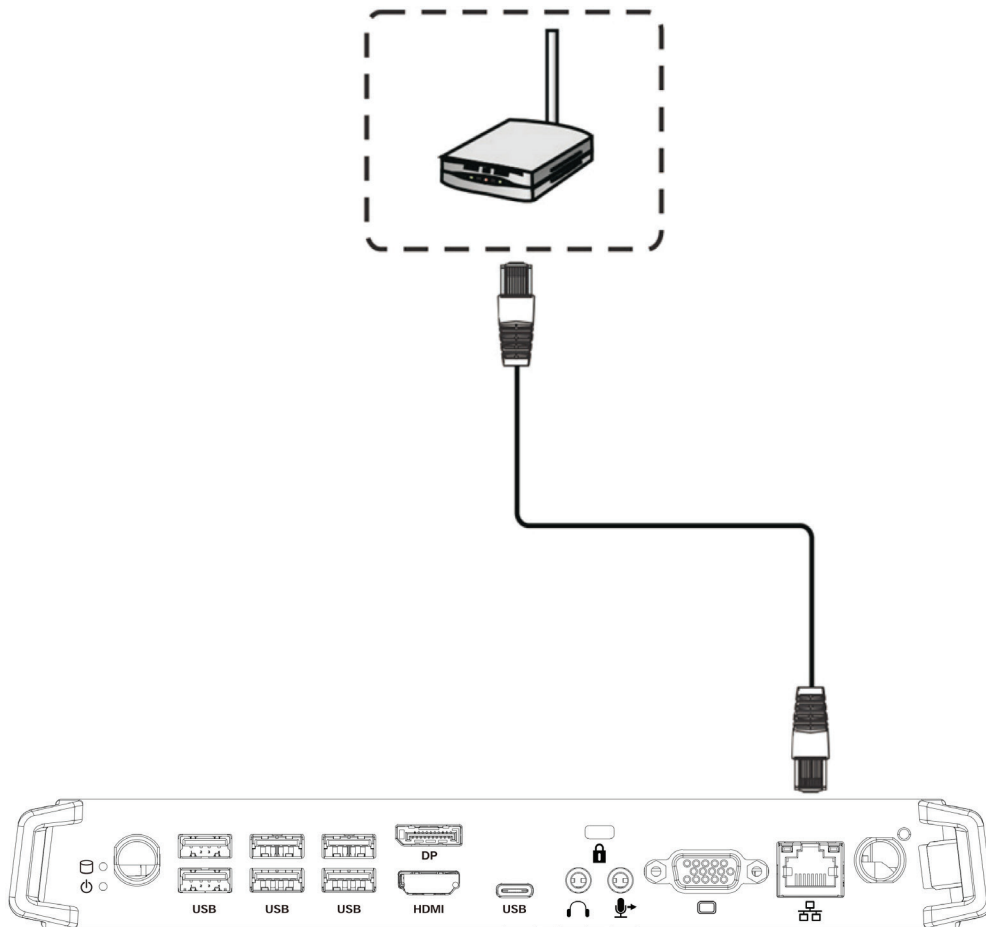
2-2



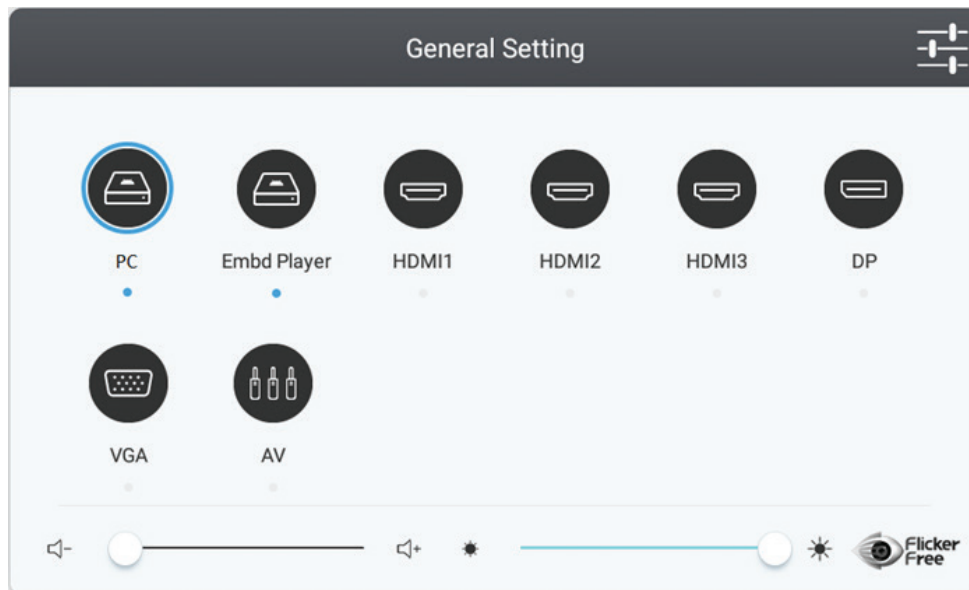
2-3



3. Internet Connection

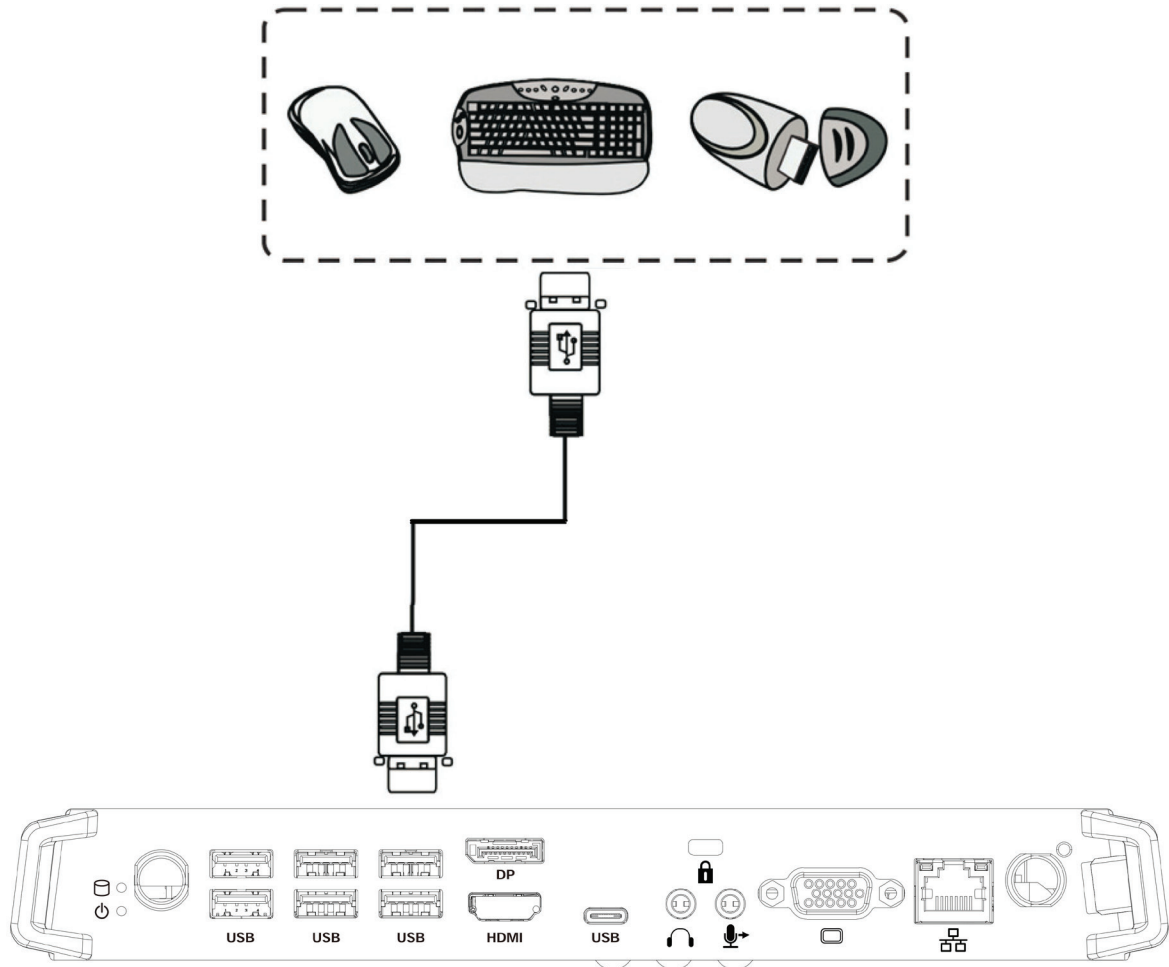


4. Input Selection



1. Press INPUT button on remote control to display the input setting menu, then press DOWN to enter the input source menu.
2. Press DOWN / UP / LEFT/ RIGHT to select PC.
3. Press Enter button on remote control or click with touch pen to select the input source.
4. Press EXIT key on remote control or click blank area outside menu with touch pen to quit the on-screen menu.

5. USB Connection





INTEL UNITE[®] SOLUTION - QUICK START GUIDE

1 Introduction

This document provides a quick reference for some of the basic features of the Intel Unite[®] client application.

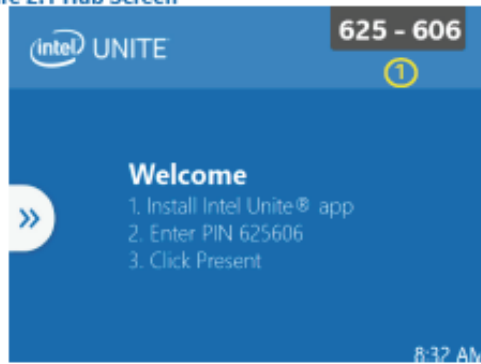
Refer to the *Intel Unite[®] Solution Deployment Guide* for more information about the server, hub, and client setup.

Refer to the *Intel Unite[®] Solution User Guide* for details about using the hub and client.

This document assumes that the hub and client are already set up with the hub application running, the client application installed, and the client registered with the Intel Unite[®] solution server.

2 Connect

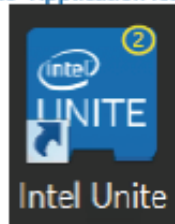
Figure 2.1 Hub Screen



On the Hub

1. Take note of the PIN displayed on the hub screen.

Figure 2.2 Intel Unite® Application Icon



On the Client

2. Launch the Intel Unite® client application.

Figure 2.3 Client PIN Entry Screen



On the Client

3. Enter the PIN in the client application.

Figure 2.4 Client Connected Screen



On the Client

4. This is the view of the client after connecting to the hub.

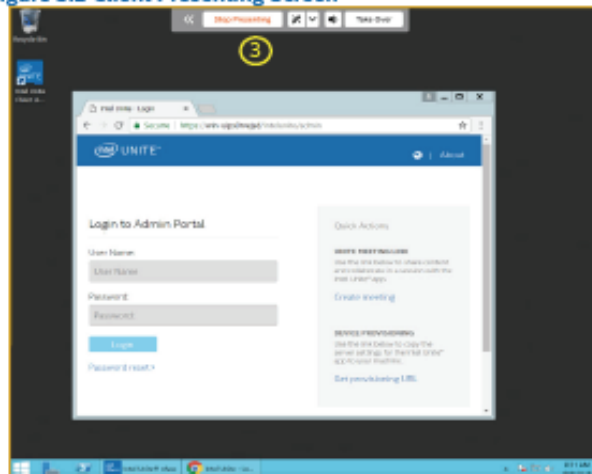
3 Present

Figure 3.1 Client Connected Screen



1. Connect to the hub. Refer to Connect, page 6.
2. Click the Present button.

Figure 3.2 Client Presenting Screen



3. The client is now presenting the screen, indicated by an orange border and a control panel at the top.
Note: The Take Over button is only available when multiple users are presenting to the same hub display.

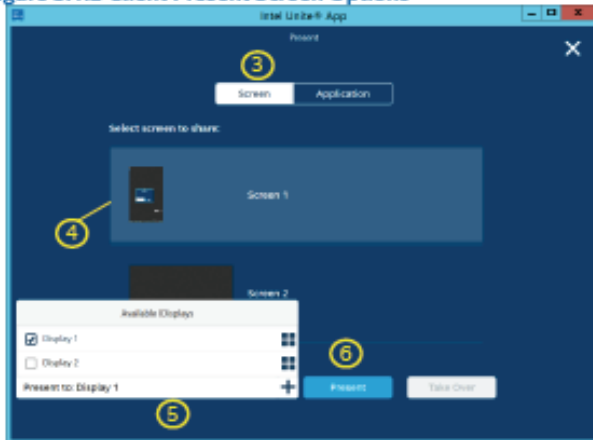
3.1 Present Screen

Figure 3.1.1 Client Connected Screen



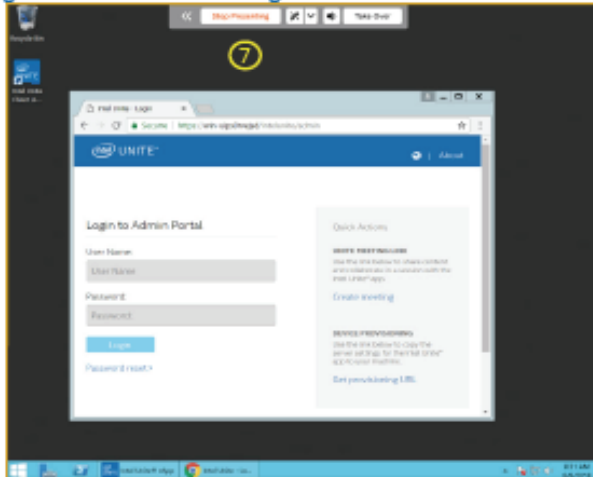
1. Connect to the hub. Refer to [Connect](#) for details.
2. Click the **more options** icon next to the **Present** button.

Figure 3.1.2 Client Present Screen Options



3. Select **Screen**.
4. Choose a screen to display.
5. Choose the hub display to present to.
6. Click the **Present** button.

Figure 3.1.3 Client Presenting Screen



7. The client is now presenting the screen, as indicated by the control panel at the top and the yellow border around the screen.

Note: The **Take Over** button is only available when multiple users are presenting to the same hub display.

Figure 3.1.4 Present Control Bar



Control bar options:

- A. Minimize panel
- B. Stop presenting
- C. Enable/Disable annotate
- D. Advanced annotation options
- E. Mute/Unmute audio during video playback
- F. Take Over presenting
- G. Enable/Disable Screen Control

Notes:

The **Take Over** button is only available when multiple users are presenting to the same hub display.

Screen Control button appears when the hub display is touch capable.

3.2 Present Application

Figure 3.2.1 Client Connected Screen



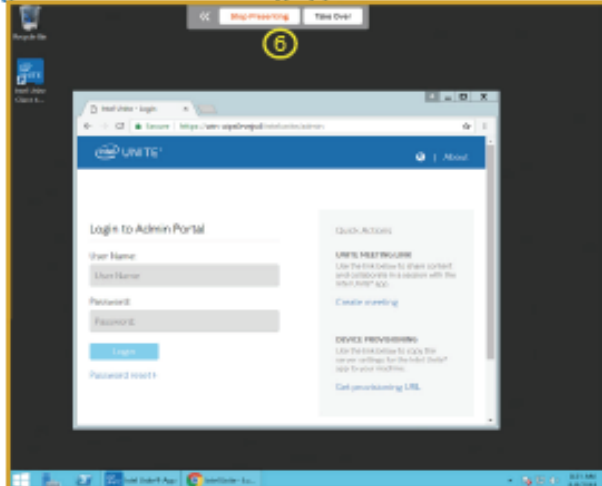
1. Connect to the hub. Refer to [Connect](#) for details.
2. Click the **more options** icon next to the **Present** button.

Figure 3.2.2 Client Present Application Option



3. Select **Application**.
4. Choose an application to display.
5. Click the **Present** button.

Figure 3.2.3 Client Presenting Application Screen



6. The client is now presenting the application, as indicated by the control panel at the top and the orange border around the application. When presenting an application, the control bar will look different from the one shown when presenting a screen.
- Note:** The **Take Over** button is only available when multiple users are presenting to the same hub display.

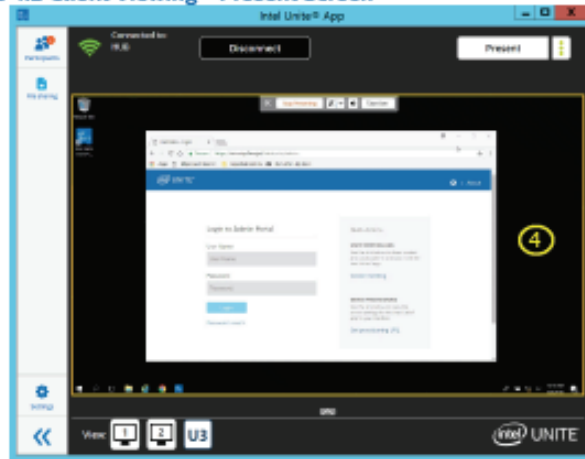
4 Viewing

Figure 4.1 Client Connected Screen



1. Connect to the hub. Refer to [Connect](#) for details.
2. Another user starts presenting.
3. Click the user whose presentation you want to view. The view differs if the presenter is sharing a screen or sharing an application.

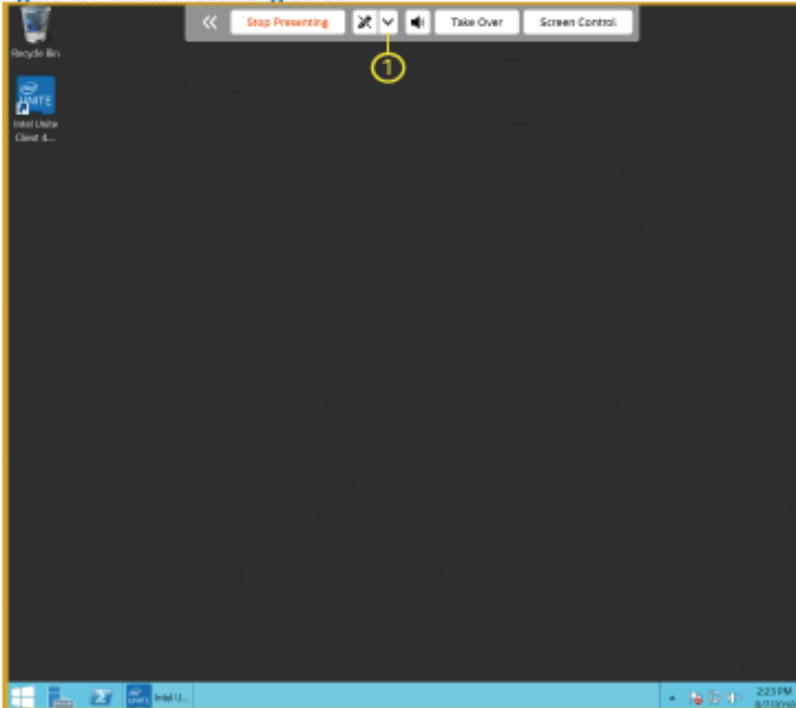
Figure 4.2 Client Viewing – Present Screen



4. [Figure 4.2](#) shows the client viewing a presentation.

5 Annotation

Figure 5.1 Client Presenting Screen



1. While presenting, click the **down arrow** next to the pencil icon. Refer to [Present Screen](#) for details. An orange border will appear when presenting.

Notes:

The **Take Over** button is only available when multiple users are presenting to the same hub display.

The **Screen Control** button appears when the hub display is touch capable.

Figure 5.2 Client Presenting Screen with Annotation Control Panel Open



2. Select an ink color.
3. Click the **pencil icon**. The icon changes color to match the selected ink color.
4. Click or touch and drag to annotate.

Note: Annotations are compatible with touch-enabled screens (touch and drag) as well as mouse devices (click and drag).

6 File Sharing

Figure 6.1 Client Connected Screen



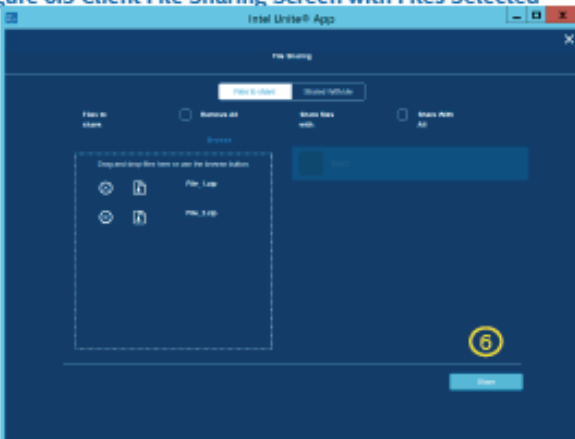
1. Connect to the hub. Refer to [Connect](#) for details.
2. Click the **File Sharing** icon.

Figure 6.2 Client File Sharing Screen



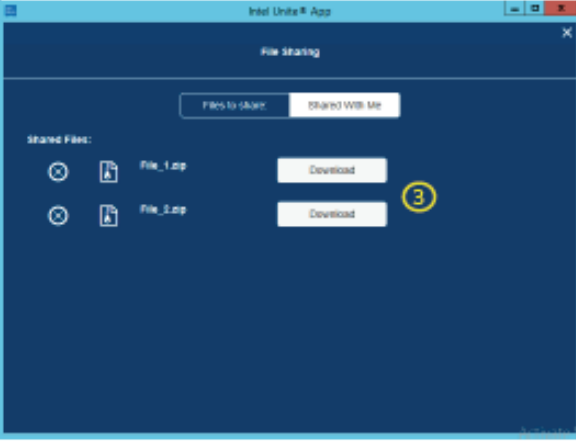
3. Select **Files to share**.
4. Drag and drop files to be shared.
5. Select the **User** to share files with.

Figure 6.3 Client File Sharing Screen with Files Selected



6. Click the **Share** button.

7 Receive Files

<p>Figure 7.1 Client Connected Screen</p> 	<p>Example: Another user has shared files with this user.</p> <ol style="list-style-type: none">1. Click the File Sharing icon. Notice the orange circle with a number in it next to the File Sharing icon. This number is the number of files being shared with the user.
<p>Figure 7.2 Client File Sharing Screen</p> 	<ol style="list-style-type: none">2. Select Shared With Me.
<p>Figure 7.3 Client Shared with Me Screen</p> 	<ol style="list-style-type: none">3. Click the Download button to download the file.

8 Lock Meeting

Figure 8.1 Client Connected Screen



1. Connect to the hub. Refer to [Connect](#) for details.
2. Click the **Participants** icon.

Figure 8.2 Client Participants Screen



3. Click the **Lock Session** switch to lock the meeting. The lock will turn from gray to green. When the meeting is locked, no additional users can join the meeting.

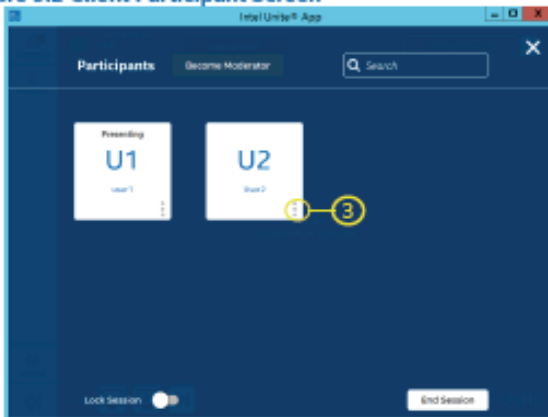
9 Disconnect User

Figure 9.1 Client Connected Screen



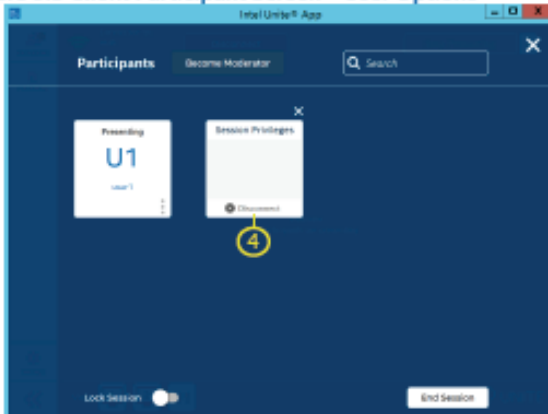
1. Connect to the hub. Refer to [Connect](#) for details.
2. Click the **Participants** icon.

Figure 9.2 Client Participant Screen



3. Click the **three dots** at the bottom-right corner of a user to open the user actions.

Figure 9.3 Client Participant Screen – User Options



4. Click **Disconnect** to disconnect the user.

6. Specifications

IO ports		1 x Display Port 1 x HDMI 1 x VGA 1 x LAN 2 x USB 2.0 (5V/0.5A) 4 x USB 3.0 (5V/0.9A) 1 x USB type C 1 x Earphone 1 x Microphone
Power		100V-240V AC 50/60HZ
Operation Conditions	Temperature Humidity Altitude	32°F to 113°F (0°C to 45°C) 10% ~ 90% non-condensing 0 meter to +5000 meters above sea level
Storage Conditions	Temperature Humidity Altitude	-4°F to 140°F (-20°C to 60°C) 10% ~ 90% non-condensing 0 meter to +5000 meters above sea level
Dimensions	Physical(mm)	246.1 x 263.4 x 32.2
Weight	Physical(kg)	1.95
Power consumption		95W
Frequency Range and Output Power (Max.)		2402 to 2480 MHz(BT) 2.0 dBm 2402 to 2480 MHz(LE) 3.73 dBm 2412 to 2472 MHz 17.41 dBm 5150 to 5250 MHz 18.94 dBm 5250 to 5350 MHz 18.94 dBm 5470 to 5725 MHz 18.94 dBm

7. Customer Support

For technical support or product service, see the table below or contact your reseller.

NOTE: You will need the product serial number.

Country/Region	Website	T= Telephone C = CHAT ONLINE	Email
Australia New Zealand	www.viewsonic.com.au	AUS= 1800 880 818 NZ= 0800 008 822	service@au.viewsonic.com
Canada	www.viewsonic.com	T = 1-866-463-4775	service.ca@viewsonic.com
Europe	www.viewsoniceurope.com	http://www.viewsoniceurope.com/eu/support/call-desk/	
Hong Kong	www.hk.viewsonic.com	T= 852 3102 2900	service@hk.viewsonic.com
India	www.in.viewsonic.com	T= 1800 419 0959	service@in.viewsonic.com
Korea	ap.viewsonic.com/kr/	T= 080 333 2131	service@kr.viewsonic.com
Latin America	www.viewsonic.com/la/	C= http://www.viewsonic.com/la/soporte/servicio-tecnico	soporte@viewsonic.com
Macau	www.hk.viewsonic.com	T= 853-2840-3687	service@hk.viewsonic.com
Middle East	ap.viewsonic.com/me/	Contact your reseller	service@ap.viewsonic.com
Puerto Rico & Virgin Islands	www.viewsonic.com	T= 1-800-688-6688 (English) C= http://www.viewsonic.com/la/soporte/servicio-tecnico	service.us@viewsonic.com soporte@viewsonic.com
Singapore/ Malaysia/ Thailand	www.ap.viewsonic.com	T= 65 6461 6044	service@sg.viewsonic.com
South Africa	ap.viewsonic.com/za/	Contact your reseller	service@ap.viewsonic.com
United States	www.viewsonic.com	T = 1-800-688-6688	service.us@viewsonic.com



ViewSonic®